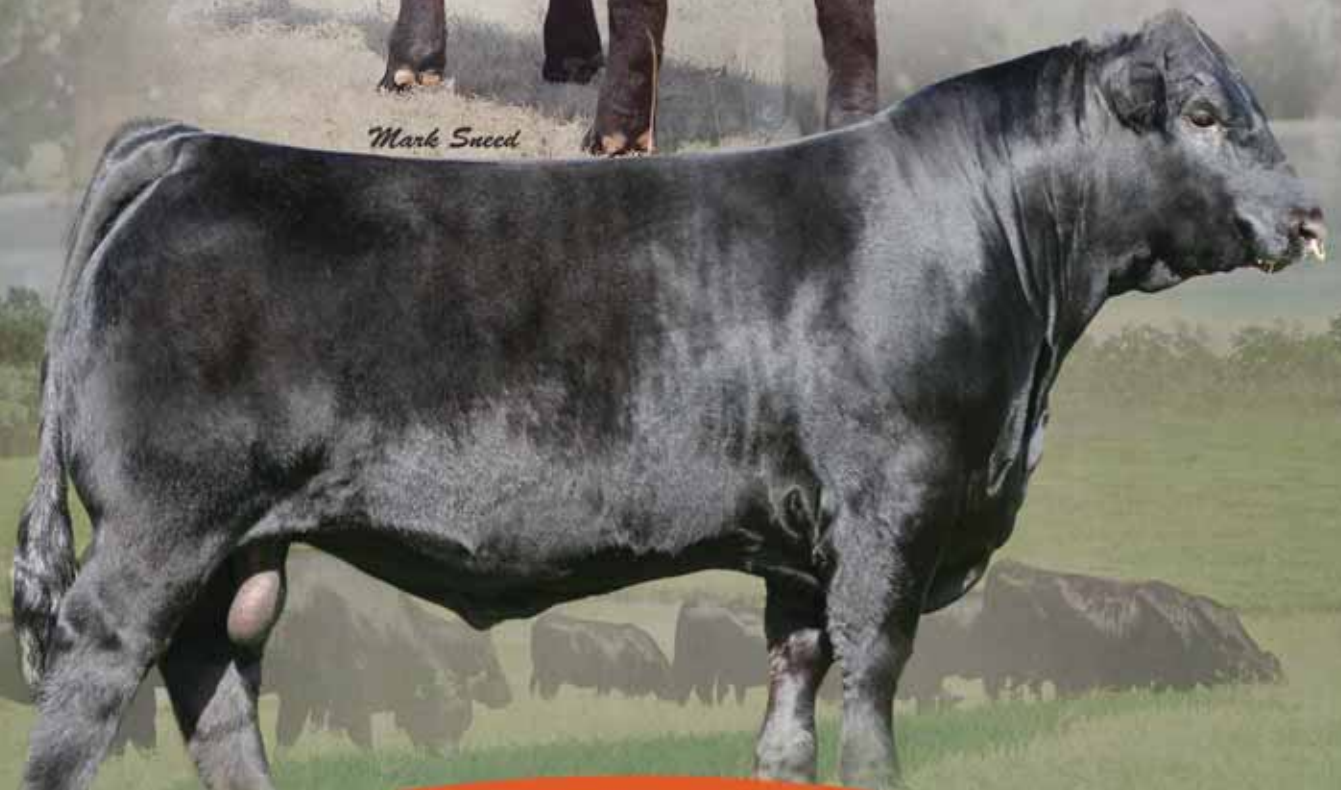


P BAR S RANCH



Mark Sneed



October 3, 2015

PROOF OF PROGRESS VIII Sale



Paul Sisemore, owner



Pictured left: Elgin, wife Jolene and daughters Taylor & Tenley Elmore



Pictured right: Taylor Elmore

Dear Limousin Enthusiasts,

2015 marks 21 years of being in the Limousin seed stock cattle business and we have never been more excited to showcase what we have developed. P Bar S Ranch or as we refer to it "The Little Ranch with Big Genetics" will showcase only our finest on October 3, 2015 for our 8th Annual Proof of Progress Production sale. We will feature only the best we have in Limousin, Lim-Flex and Angus. We take a lot of pride in being a top source for predictable genetics. We have enjoyed propagating and developing superior performance seed stock for the most quality conscious commercial and purebred seed stock over the years. They all carry and proudly represent the PBRS prefix and of course sell fully guaranteed to your liking. We strive to produce cattle that are easy to maintain, above average in their EPD's and very sound in their structure. If we can answer any questions in regards to the sale cattle or assistance with hotel or travel arrangements then please don't hesitate to call. It is our honor that you would inquire and/or attend the sale.

Best regards,

Paul Sisemore P Bar S Ranch

8th Annual Proof of Progress Production Sale

P BAR S

The Little Ranch with BIG Genetics.

Paul is a recipient of the Oklahoma Limousin Breeders Association Lifetime achievement award.



**P-BAR-S
RANCH**

OFFERING 64 LOTS ...

Limousin and Lim-Flex

- 27 Spring Bred Heifers
- 18 Fall Bred Heifers
- 1 Heifer Pregnancy
- 3 Embryo Lots
- 7 Herd Sire Prospects

Angus

- 5 Spring Bred Heifers
- 1 Fall Bred Heifer
- 2 Cow/Calf Pairs

Proof of Progress VIII Sale

10.03.15

1:00 P.M.

at the ranch

Sand Springs, Oklahoma

SCHEDULE

Friday, October 2nd

afternoon Cattle are available for viewing and refreshments

Saturday, October 3rd

8:00 am Viewing of cattle

11:30 am Complementary lunch & refreshments

1:00 pm **Proof of Progress VIII Sale**

SALE LOCATION

P Bar S Ranch, 11720 Overlook Drive, Sand Springs, Oklahoma 74063.
See page 16 for a map and directions.

SALE DAY PHONES

Elgin Elmore 918.346.2438
Randy Ratliff 615.330.2735

Ken Holloway 580.581.7652
Mark Smith 515.229.5227

HOTEL ACCOMMODATIONS

Best Western, 81st W. Ave. Exit 918.245.4999
Hampton Inn, 81st W. Ave. Exit 918.245.8500
Holiday Express, Gilcrease Museum Road 918.585.7000

AUCTIONEER

C.K. "Sonny" Booth

TRUCKING

Will be available on site to haul any purchases out the day of the sale. To make prior arrangements feel free to call R & R Marketing Co. at 615.330.2735 and we will make your buying easy and accommodating.

PAYMENT

All cattle must be paid for immediately following the conclusion of the Sale unless prior payment arrangements have been made with R&R Marketing Company at 615.330.2735.

ANNOUNCEMENTS

Announcements at the sale by the owners, auctioneers or sale management will take precedence over statements in the sale catalog.

SALE ORDER & SUPPLEMENTAL INFORMATION

Sale order and supplement sheet information will be posted Friday, October 2, 2015 at www.RRMktg.com.

TERMS & CONDITIONS

Terms of the sale are cash unless satisfactory credit arrangements have been made prior to the sale. A representative will be on hand sale day if your wishes are to insure your purchases. Please note: The sale manager is only an agent for the seller and has no responsibility other than those involved in conducting the sale. All persons who attend the sale do so at their own risk. Neither the sale manager nor P Bar S assume liability, legal or otherwise for, any accidents which may occur.

SALES TEAM

SALE CONSULTANTS



American Cattle Services, Inc.

Ken Holloway, 580.581.7652
acs@americancattleservices.com • www.americancattleservices.com



Mark Smith

phone/fax: 515.965.1458 • mobile: 515.229.5227



MC Marketing Management
Kiley McKinna, 402.350.3447

SALE MANAGEMENT

R&R

MARKETING

Randall O. Ratliff
615.330.2735

Randy@RRMktg.com
www.RRMktg.com

1212 Laurel St., Nashville, TN 37203
(#2845)

R & R Marketing will now be accepting payment by credit cards.



Dusty Morris, Sale Cattle Photographer
Audrey Christensen of Aush Rae Photography, Scenic Photographer

PBAR S

RANCH

Paul Sisemore, Owner

Manager: Elgin Elmore, 918.346.2438
elginpbars@yahoo.com • psisemore@custofab.com
11720 Overlook Dr, Sand Springs, OK 74063



Morris

Lot 1

1 PBRS Bell Ringer 44B

LIM-FLEX (50)
COW
DOUBLE PLD
HOMO BLK
01.21.14
PBRS 44B
LFF 2057505

BUFORD OKLAHOMA X239

WLR RENDEZVOUS 050R

S A V PIONEER 7301

J BAR 7 ELBA 7297

GPFF BLAQUE RULON

KEHG JULIET 10H

SAV FINAL ANSWER 0035

S A V BLACKBIRD 5297

BALDRIDGE NEBRASKA 901

J BAR 7 JULIE JAN 5406

BLACK DIAMOND

QUAIL RUN RAMONA BP

WULFS RAMBLER 8400X

TLTL POLLED PEACHES 007B

| | CED | BW | WW | YW | MA | CEM | SC | ST | DOC | CW | REA | YG | MARB | SMTI | UFAT | UREA | UIMF |
|-------|-----|----|----|-----|----|-----|----|----|-----|----|-----|-------|------|-------|------|------|------|
| EPD | 8 | 1 | 61 | 104 | 23 | 7 | - | - | - | 33 | 0.7 | -0.02 | 0.17 | 54.24 | 0.38 | 12.1 | 4.54 |
| %Rank | 40 | 50 | 60 | 25 | 50 | 25 | - | - | - | 25 | 4 | 80 | 30 | 40 | | | |

- A.I. 5.15.15 to OKSU The Profit; P.E. 5.22.15 to 7.28.15 to PBRS Anchor 390A
- Polled and homozygous black
- This 50% Lim-Flex heifer proudly represents the PBRS brand and is a result of one of the finest ever created from P Bar S that has been going strong for 21 years
- She is a big ribbed, maternal looking and very maternal made Lim-Flex donor in the making
- We love her from the ground up and appreciate your heaviness of bone, foot size and soft pasterns.
- She is sired by the SAV Pioneer son Buford Oklahoma X239 and from the famed WLR Rendezvous 050R donor
- She scanned a 12.10 for REA and 4.54 for IMF and is very solid in her EPD profile



Morris

Lot 2

PBRS Wagon Wheel 994W, dam of Lot 2.



2 PBRS Broken Wheel 449B

LIM-FLEX (25)
COW
HOMO PLD
DOUBLE BLK
03.03.14
PBRS 449B
LFF 2064133

CONNEALY CONSENSUS 7229

PBRS WAGON WHEEL 994W

CONNEALY CONSENSUS
BLUE LILLY OF CONANGA 16
G A R PREDESTINED
WLR RENDEZVOUS 050R
MK ALLIANCE 6595 187
BLINDA OF CONANGA 004
WOODHILL ADMIRAL 77K
BLUE CASH OF CONANGA 6020
B/R NEW DESIGN 036
G A R EXT 4206
GPFF BLAQUE RULON
KEHG JULIET 10H

| | CED | BW | WW | YW | MA | CEM | SC | ST | DOC | CW | REA | YG | MARB | SMTI | UFAT | UREA | UIMF |
|-------|-----|----|----|-----|----|-----|-----|----|-----|----|------|------|------|-------|------|------|------|
| EPD | 9 | 1 | 60 | 108 | 28 | 5 | 0.7 | - | 19 | 34 | 0.53 | 0.01 | 0.93 | 87.73 | 0.38 | 12.1 | 4.54 |
| %Rank | 30 | 50 | 65 | 20 | 15 | 60 | 40 | - | 55 | 25 | 20 | 85 | 1 | 1 | | | |

- A.I. 5.06.15 to TMCK Hydraulic; P.E. 5.22.15 to 7.28.15 to PBRS Anchor 390A
- Black and homozygous polled
- What a beautiful female and one of the top replacement heifers ever created at P Bar S Ranch
- This bred, first calf heifer is so long and pretty up through her front end, long and level down her top line and very strong in her stance
- She has the striking profile and unique and prominent side profile
- This daughter of Connealy Consensus 7229 is from the GAR Predestined daughter from the consistent producing donor WLR Rendezvous 050R, PBRS Wagon Wheel 994W. She is a partnership donor with P Bar S Ranch and Double A Limousin, Shawnee, KS
- This future donor prospect ranks in the top 1% of the breed for marbling and \$MTI and top 15% of the breed for milk, TM and REA



Morris

Lot 3



Oak Hill Miss Wix 72S, dam of Lot 3.

3 PBRS Braided Wix 45B

LIM-FLEX (50)
COW
HOMO PLD
HOMO BLK
01.22.14
PBRS 45B
LFF 2057506

DHVO DEUCE 132R

OAK HILL MISS WIX 72S

GPFF BLAQUE RULON

AMY JO DHAN 20L

S A V 8180 TRAVELER 004

OAK HILL MISS WIX 9402

BLACK DIAMOND
QUAIL RUN RAMONA BP
BLACK CAT DHAN 152G
GPFF AMBER JO
SITZ TRAVELER 8180
BOYD FOREVER LADY 8003
N BAR EMULATION EXT
HOMESTRETCH MISS WIX 663

| | CED | BW | WW | YW | MA | CEM | SC | ST | DOC | CW | REA | YG | MARB | SMIT | UFAT | UREA | UIMF |
|-------|-----|-----|----|-----|----|-----|------|----|-----|----|------|-------|------|-------|------|------|-------|
| EPD | 8 | 1.9 | 73 | 109 | 21 | 5 | 1.24 | 12 | 19 | 36 | 0.29 | -0.07 | 0.02 | 52.63 | | | |
| %Rank | 40 | 70 | 15 | 15 | 65 | 5 | 3 | 85 | 55 | 20 | 65 | 65 | 50 | 45 | 0.41 | 0.2 | 12.54 |

- A.I. 4.27.15 to PBRS Milestone; P.E. 5.22.15 to 7.28.15 to PBRS Anchor 390A
- Homozygous polled and homozygous black
- We have said again and again BUT it is just so true ... there is nothing any better in our breed then crossing DHVO Deuce with the best Angus you can find. One of the leading Angus donors at P Bar S is the Oak Hill Miss Wix 72S donor. She is a proven daughter of SAV 8180 Traveler 004 and has been a very prominent donor in their program.
- This heifer is made as perfect as you can imagine. We love her from the ground up, her movement, her depth and capacity along with her brood cow look
- She has the feminine and prominent look in her favor and we feel she will follow a path like the select few others that have come from the Oak Hill Miss Wix 72S donor



Morris

Lot 4

4 PBRS Bailey Wix 43B

LIM-FLEX (50)
COW
HOMO PLD
HOMO BLK
01.18.14
PBRS 43B
LFF 2057166

DHVO DEUCE 132R

OAK HILL MISS WIX 72S

GPFF BLAQUE RULON

AMY JO DHAN 20L

S A V 8180 TRAVELER 004

OAK HILL MISS WIX 9402

BLACK DIAMOND

QUAIL RUN RAMONA BP

BLACK CAT DHAN 152G

GPFF AMBER JO

SITZ TRAVELER 8180

BOYD FOREVER LADY 8003

N BAR EMULATION EXT

HOMESTRETCH MISS WIX 663

| | CED | BW | WW | YW | MA | CEM | SC | ST | DOC | CW | REA | YG | MARB | SMTI | UFAT | UREA | UIMF |
|-------|-----|-----|----|-----|----|-----|------|----|-----|----|------|------|------|-------|------|------|-------|
| EPD | 8 | 1.3 | 71 | 109 | 21 | 5 | 1.24 | 12 | 19 | 36 | 0.16 | 0.17 | 0.02 | 52.63 | 0.34 | 0.4 | 11.58 |
| %Rank | 40 | 55 | 20 | 15 | 65 | 60 | 3 | 85 | 55 | 20 | 90 | >95 | 50 | 45 | | | |



Morris

PBRS 024X, full sib to Lot 4.

- A.I. 4.27.15 to TMCK Hydraulic; P.E. 5.20.15 to 7.28.15 to PBRS Anchor 390A
- Homozygous polled and homozygous black
- Here is a full sibling to 45B and one that is every bit as good
- This daughter of the once national champion bull and many times MOE National Gold Medal sire DHVO Deuce is from the elite Angus donor Oak Hill Miss Wix 72S
- P Bar S Bailey Wix is a result of the blending of a powerful and proven purebred bull with a prominent Angus female
- This first calf heifer is very feminine up through her head and neck and has a tremendous amount about rib shape and extra spring of rib
- She represents all that is needed to be a big time brood cow and in turn a future donor cow



MAGS Yip, sire of Lots 5 - 8.

6 PBRS Back Roads 428B

LIM-FLEX (50)
COW
HOMO PLD
DOUBLE BLK
02.21.14
PBRS 428B
LFF 2063063

MAGS YIP

BUFORD ERICA 0197

MAGS THE GENERAL
AUTO CARMINDA 656S

LIMESTONE TRUMP
J BAR 7 ERICA 726S

AUTO DOLLAR GENERAL 122R
EXLR LUVLY 821M
JCL LODESTAR 27L
AUTO CARMINDA 872P
B C MATRIX 4132
EXG COMMITMENT N378 LS
WOODHILL FORESIGHT
J BAR 7 ERICA 614K

| | CED | BW | WW | YW | MA | CEM | SC | ST | DOC | CW | REA | YG | MARB | SMTI | UFAT | UREA | UIMF |
|-------|-----|-----|----|-----|----|-----|----|----|-----|----|------|------|------|-------|------|------|------|
| EPD | 7 | 1.2 | 69 | 111 | 26 | 6 | - | - | - | 38 | 0.04 | 0.12 | 0.43 | 65.45 | 0.32 | 0.34 | 12.6 |
| %Rank | 50 | 50 | 25 | 15 | 25 | 45 | - | - | - | 15 | >95 | >95 | 10 | 10 | | | |

- A.I. 5.19.15 to PBRS Milestone; P.E. 5.20.15 to 7.28.15 to PBRS Anchor 390A
- Double black and homozygous polled
- MAGS Yip is a once breed top selling lot and now breed leading sire of excellence. He is a big footed, long bodied and very appealing purebred herd sire that seems to work the very best when he is mating to Angus or lower percentage females. This young female stands true to that statement
- P Bar S Back Roads 428B scanned a 12.60 for REA and a 5.65 for IMF. We appreciate that she ranks the top 10% of the breed for marbling with a .43 and \$MTI with a 65.54. She also ranks in the top 15% of the breed for yearling weight with a 111 and 38 for carcass weight
- Everything is in order with this young first calf heifer and we are certain when you see her on sale day you will appreciate her as much as we do



PBRS 011X, dam of Lot 8.

5 PBRS Backstage 464B

LIM-FLEX (50)
COW
HOMO PLD
DOUBLE BLK
03.07.14
PBRS 464B
LFF 2063033

MAGS YIP

BUFORD BARBARAMERE JET 90

MAGS THE GENERAL
AUTO CARMINDA 656S

WERNER ULTIMATE 1596
SITZ BARBARAMERE JET 2454

AUTO DOLLAR GENERAL 122R
EXLR LUVLY 821M
JCL LODESTAR 27L
AUTO CARMINDA 872P
S A V 8180 TRAVELER 004
RITA 2811 0F2536 BVND 878
SITZ ALLIANCE 9800
SITZ BARBARAMERE JET 3057

| | CED | BW | WW | YW | MA | CEM | SC | ST | DOC | CW | REA | YG | MARB | SMTI | UFAT | UREA | UIMF |
|-------|-----|-----|----|-----|----|-----|----|----|-----|----|-------|------|------|------|------|------|-------|
| EPD | 7 | 1.2 | 62 | 100 | 28 | 7 | - | - | - | 32 | -0.12 | 0.14 | 0.44 | 63.6 | 0.41 | 0.2 | 12.54 |
| %Rank | 50 | 50 | 55 | 35 | 15 | 25 | - | - | - | 30 | >95 | >95 | 10 | 15 | | | |

- A.I. 5.19.15 to RLBH Air Force One; P.E. 5.20.15 to 7.28.15 to PBRS Anchor 390A
- A mating that has worked out quite well at P Bar S Ranch is the blending of MAGS Yip with Angus females. They top sellers in the '14 P Bar S Ranch sale were a result of this mating. MAGS Yip is a son of MAGS The General and from the predictable AUTO Carminda donor
- Her dam is a purebred Angus female and a daughter of Werner Ultimate 1596
- This young, double black and homozygous polled female is very feminine up through her neck, smooth shouldered and very up headed and stylish
- She ranks in the top 15% of the breed for milk with a 28 and \$MTI with a 63.60
- We appreciate her marbling score of .44 in which ranks her in the breeds top 10%

7 PBRS Bent Rail 423B

LIM-FLEX (50)
COW
HOMO PLD
HOMO BLK
01.22.14
PBRS 45B
LFF 2057506

MAGS YIP

BUFORD FOREVER LAYD 9286

MAGS THE GENERAL
AUTO CARMINDA 656S

J BAR 7 ON TIME 6537
C&H FOREVER LADY 216

AUTO DOLLAR GENERAL 122R
EXLR LUVLY 821M
JCL LODESTAR 27L
AUTO CARMINDA 872P
BOYD ON TARGET 1083
PAR MISS EXT PRINCESS 187
CONNELLY FRONTLINE
S V F FOREVER LADY 181G

| | CED | BW | WW | YW | MA | CEM | SC | ST | DOC | CW | REA | YG | MARB | SMTI | UFAT | UREA | UIMF |
|-------|-----|-----|----|----|----|-----|----|----|-----|----|------|------|------|-------|------|------|------|
| EPD | 10 | 0.1 | 52 | 91 | 29 | 10 | - | - | - | 25 | 0.01 | 0.06 | 0.49 | 63.21 | 0.34 | 0.27 | 11.5 |
| %Rank | 25 | 30 | 90 | 55 | 10 | 2 | - | - | - | 55 | >95 | 95 | 10 | 15 | | | |

- A.I. 5.14.15 to RLBH Air Force One; P.E. 5.20.15 to 7.28.15 to PBRS Anchor 390A
- This MAGS Yip daughter is from a daughter of J Bar 7 On Time 6537
- This double black and homozygous polled, 50% Lim-Flex first calf heifer is made well, moves well and has that excellent side profile to her
- She ranks in the top 10% of the breed for milk with a 29 and .49 for marbling. We admire her 15% ranking in the breed for \$MTI with a 15 and top 2% of the breed for CEM with a 10
- She scanned an 11.50 for REA and a 4.360 for IMF
- The heifer will be and is easy to maintain, sound from the group up and very docile, all of

8 PBRS Back Door 477B

LIM-FLEX (50)
COW
HOMO PLD
DOUBLE BLK
03.13.14
PBRS 477B
LFF 2064558

MAGS YIP

PBRS0111X

MAGS THE GENERAL
AUTO CARMINDA 656S

S A V BISMARCK 5682
MAGS NEW GAMES 169N

AUTO DOLLAR GENERAL 122R
EXLR LUVLY 821M
JCL LODESTAR 27L
AUTO CARMINDA 872P
G A R GRID MAKER
S A V ABIGALE 0451
MAGS LITTLE BROTHER
MAGS GAMES WE PLAY 245L

| | CED | BW | WW | YW | MA | CEM | SC | ST | DOC | CW | REA | YG | MARB | SMTI | UFAT | UREA | UIMF |
|-------|-----|------|----|----|----|-----|------|----|-----|----|------|------|------|-------|------|------|------|
| EPD | 9 | -0.3 | 50 | 95 | 55 | 9 | 0.45 | 11 | 2 | 24 | 0.17 | -0.1 | 0.27 | 58.74 | 0.27 | 0.23 | 11.5 |
| %Rank | 30 | 25 | 95 | 55 | 20 | 10 | 75 | 90 | >95 | 60 | 85 | 55 | 20 | 25 | | | |

- A.I. 5.07.15 to RLBH Air Force One; P.E. 5.20.15 to 7.28.15 to PBRS Anchor 390A
- Here is a black and homozygous polled 75% Lim-Flex heifer that comes from the heart of the replacement pen of cattle at P Bar S
- She is sired by MAGS Yip, the leading son of MAGS The General and from a daughter of SAV Bismarck back to the donor MAGS New Games 169N
- We admire the combination of extreme length body along with a tremendous of rib shape and volume
- She is so much more than homozygous polled, she is strong in her EPD profile, scanned well and is very complete in her design

9 PBRS Back In Black 458B

LIM-FLEX (50)
COW
DOUBLE PLD
DOUBLE BLK
03.05.14
PBRS 485B
LFF 2063049

EXAR DENVER 2002B
CMIL MISSY 811U
EXAR UPSHOT 0562B
EXAR ROYAL LASS 1067
AUTO DOLLAR GENERAL 122R
CMIL LADY MADE 4009P
SITZ UPWARD 307R
EXAR BARBARA T020
EXAR 263C
BR ROYAL LASS 19-132
LVLS SECRET WEAPON 4408K
AUTO KYRIA 232K
AUTO TAYLOR MADE 755J
AUTO BLACK GAEA 268G

| | CED | BW | WW | YW | MA | CEM | SC | ST | DOC | CW | REA | YG | MARB | SMTI | UFAT | UREA | UIMF |
|-------|-----|------|----|-----|----|-----|------|----|-----|----|------|-------|------|-------|------|------|------|
| EPD | 11 | -0.2 | 76 | 114 | 30 | 10 | 0.75 | - | 16 | 36 | 0.55 | -0.05 | 0.54 | 72.94 | 0.40 | 13.9 | 4.64 |
| %Rank | 15 | 25 | 10 | 10 | 10 | 2 | 40 | - | 65 | 20 | 20 | 70 | 5 | 3 | | | |

- A.I. 4.18.15 to PBRS Milestone 137Y; P.E. 5.20.15 to 7.28.15 to PBRS Anchor 390A
- Polled and Black
- A direct daughter of one of the most spoken of Angus bulls to ever be created in the Express Ranches program, EXAR Denver. Denver is currently valued at \$1,020,000.
- This daughter of CMIL Missy 811U performed exceptionally in a deep set of 2014 born females here at P Bar S, she was a contender for the top weaning weight and reached ratio'd 105 for yearling weight. Her performance is right in line with her exceptional EPD profile across the board.
- Long sided, level spined and exceptionally sound structured.



Lot 9

10 PBRS Black Belt 418B

LIM-FLEX (50)
COW
HOMO PLD
DOUBLE BLK
02.15.14
PBRS 418B
LFF 2063059

MAGS THE GENERAL
BUFORD ERICA 9312
AUTO DOLLAR GENERAL 122R
EXLR LUVLY 821M
J BAR 7 ALLIANCE 6869
LCC ERICA LG008
LVLS SECRET WEAPON 4408K
AUTO KYRIA 232K
AUTO BLACK DAKOTA 129J
EXLR LUVLY 084F
SITZ ALLIANCE 6595
SITZ EVERELDA ENTENSE 219
BON VIEW NEW DESIGN 1407
LEACHMAN B C D3243

| | CED | BW | WW | YW | MA | CEM | SC | ST | DOC | CW | REA | YG | MARB | SMTI | UFAT | UREA | UIMF |
|-------|-----|-----|----|----|----|-----|----|----|-----|----|------|----|------|-------|------|-------|------|
| EPD | 5 | 1.5 | 61 | 96 | 26 | 8 | - | - | - | 29 | 0.07 | 0 | 0.26 | 57.98 | 0.22 | 11.16 | 3.89 |
| %Rank | 75 | 60 | 60 | 45 | 25 | 15 | - | - | - | 40 | 95 | 85 | 25 | 25 | | | |

- A.I. 5.19.15 to RLBH Air Force One; P.E. 5.22.15 to 7.28.15 to PBRS Anchor 390A
- Homozygous polled and double black
- Stemming from the very same Leachman Erica cow family that has produced the very best herd sires and foundation females at Buford Ranches and throughout the Angus breed from coast to coast, border to border.
- With this 50% Lim-Flex pedigree, you get proven success on the topside of her pedigree with MAGS The General and maternally with LCC Erica LG008.

12 PBRS Buckets of Fun 445B

LIM-FLEX (62)
COW
DOUBLE PLD
HOMO BLK
03.01.14
PBRS 455B
LFF 2063054

MAGS XYLOID
AUTO WHITNEE 605W
DHVO DEUCE 132R
BOHI RHONDA 314R
AUTO FULL THROTTLE 771R
EXAR LASSIE C 3209
GPFF BLAQUE RULON
AMY JO DHAN 20L
EXLR NEW GENERATION 071M
DAVIS ROSETTA 9514
GPFF BLAQUE RULON
AUTO MISS DIAMOND 3747N
TC MOONSHINE 001
LEACHMAN LASSIE 7223

| | CED | BW | WW | YW | MA | CEM | SC | ST | DOC | CW | REA | YG | MARB | SMTI | UFAT | UREA | UIMF |
|-------|-----|-----|----|----|----|-----|------|----|-----|----|------|------|------|-------|------|------|------|
| EPD | 9 | 0.6 | 61 | 98 | 22 | 8 | 0.46 | 10 | 18 | 29 | 0.06 | 0.11 | 0.27 | 57.51 | 0.32 | 11.6 | 4.16 |
| %Rank | 30 | 40 | 60 | 40 | 60 | 15 | 75 | 95 | 60 | 40 | 95 | >95 | 20 | 30 | | | |

- A.I. 4.28.15 to AUTO Lucky Strike; P.E. 5.22.15 to 7.28.15 to PBRS Anchor 390A
- Homozygous black
- An exceptional female here who excels in CEM and MB epd, ranking in the top 20% for both.
- 445B carries the appealing profile of her famous sire, MAGS Xyloid along with the maternal power of AUTO Whitnee 605W. From weaning to this day, Whitnee has been one of the deepest sided and easiest fleshing females of her contemporary group.
- Daughters of MAGS Xyloid are in high demand, this is an opportunity to acquire one the most ideally mated females in the offering.

11 PBRS Bailey 429B

LIM-FLEX (50)
COW
DOUBLE PLD
BLK
02.22.14
PBRS 429B
LFF 2063055

EXLR DAKOTA 353G
BT JANNET 70M
WULF'S COUNT DOWN 9251C
CANE RIDGE DAPHNE 011D
BT RIGHT TIME 24J
B L R JANNET 7068
LKCC TOMAHAWKS TOUCHDOWN
MISS WOLFETTE 9051X
WULFS RAMBLER 8400X
YKCC MISS IRONSIDE 110NS
LEACHMAN RIGHT TIME
SITZ EVERELDA ENTENSE 190
KRUGERRAND OF DONAMERE490
JANNET OF R R 776B

| | CED | BW | WW | YW | MA | CEM | SC | ST | DOC | CW | REA | YG | MARB | SMTI | UFAT | UREA | UIMF |
|-------|-----|-----|----|----|----|-----|------|----|-----|----|-------|-------|------|-------|------|------|------|
| EPD | 6 | 1.2 | 52 | 82 | 20 | 4 | 0.48 | 12 | - | 20 | -0.09 | -0.02 | 0.13 | 50.71 | 0.27 | 8.87 | 4.08 |
| %Rank | 65 | 50 | 90 | 75 | 75 | 75 | 75 | 85 | - | 75 | >95 | 80 | 35 | 50 | | | |

- A.I. 4.26.15 to PBRS Milestone 137Y; P.E. 5.20.15 to 7.28.15 to PBRS Anchor 390A
- Double Polled and Black
- A granddaughter of Cane Ridge Daphne 011D, one of the true matriarchs of the Limousin breed.
- PBRS Bailey 429B is out of an exceptional Angus female, who is sired by the Angus cowmaker, BT Right Time 24J.



AUTO Lucky Strike, service sire to Lot 12.



Lot 13

13 PBRS Belmont 442B

LIM-FLEX (50)
COW
DOUBLE PLD
DOUBLE BLK
02.27.14
PBRS 442B
LFF 2063052

EF XCESSIVE FORCE

PBRS 0158X

D A TRAVELER 004 703
CFLX MOLLYS IMAGE
S A V NET WORTH 4200
WLR RENDEZVOUS 050R

S A V 8180 TRAVELER 004
ROSEWOOD ERICA 5010
DHVO DEUCE 132R
JCL PEPPERMINT
S A V 8180 TRAVELER 004
S A V MAY 2410
GPFF BLAQUE RULON
KEHG JULIET 10H

| | CED | BW | WW | YW | MA | CEM | SC | ST | DOC | CW | REA | YG | MARB | \$MTI | UFAT | UREA | UIMF |
|-------|-----|-----|----|-----|----|-----|------|----|-----|----|------|------|------|-------|------|-------|------|
| EPD | 8 | 0.4 | 69 | 111 | 26 | 8 | 1.05 | - | 11 | 36 | 0.34 | 0.04 | 0.39 | 64.94 | 0.37 | 10.75 | 5.01 |
| %Rank | 40 | 35 | 25 | 15 | 25 | 15 | 10 | - | 85 | 20 | 55 | 95 | 15 | 15 | | | |

- A.I. 5.6.15 to AUTO Lucky Strike; P.E. 5.22.15 to 7.28.15 to PBRS Anchor 390A
- Double Polled and Double Black
- By believing that balanced performance data, functional cattle and exceptional customer service is the key to longevity in the purebred livestock business, we have been able to produce such great ones as PBRS Belmont 442B. Her numeric strength across the board ranks her above average for every major indicator of growth, calving ease and milk.
- This beautifully designed female ranks in the top 15% of the breed for MB and \$MTI.
- It goes without saying that the value is tremendously increased due to the fact that she maternally traces back to the WLR Rendezvous cow family that produced many time champion JCL Katniss and record seller JCL Thriller.



Lot 9

14 PBRS Buckles and Banners

LIM-FLEX (46)
COW
HOMO PLD
RED
02.17.14
PBRS 420B
LFF 2064131

LH U HAUL 135U

PBRS UP TOWN GIRL 48U

BASIN FRANCHISE P142
EXLR DUCHESS 7129R
DHVO TREY 133R
SUMMITCREST GAYBIRD 4P38

C A FUTURE DIRECTION 5321
BASIN CHLOE 812L
EXLR NEW GENERATION 071M
EXLR 199H
GPFF BLAQUE RULON
AMY JO DHAN 20L
S/C FORTUNE 0L02
SUMMITCREST GAYBIRD 2K42

| | CED | BW | WW | YW | MA | CEM | SC | ST | DOC | CW | REA | YG | MARB | \$MTI | UFAT | UREA | UIMF |
|-------|-----|------|-----|----|----|-----|-----|----|-----|----|------|-------|------|-------|------|-------|------|
| EPD | 10 | -0.5 | 48 | 95 | 22 | 2 | 0.6 | - | 15 | 28 | 0.33 | -0.02 | 0.33 | 64.53 | 0.36 | 13.16 | 4.55 |
| %Rank | 25 | 20 | >95 | 45 | 60 | 90 | 50 | - | 70 | 45 | 60 | 80 | 15 | 15 | | | |

- A.I.4.27.15 to TMCK Hydraulic; P.E. 5.20.15 to 7.28.15 to PBRS Anchor 390A
- Homozygous Polled and Red
- A direct daughter of the \$29,000 valued donor at Double A Limousin & Abele Cattle Co., PBRS Uptown Girl 48U and a maternal sister to the many high sellers including a \$12,500 selections by Council Family Limousin. Her solid structure and substance, easily put her in the same noteworthy category of her great siblings.
- 420B has an intriguing performance profile which post a negative BW epd and 64 \$MTI, both of which have tremendous economic importance.
- Sired by the exceptional data generator, LH U Haul 135U.



OKSU The Profit, service sire to Lot 15.

15 PBRS Break Away 422B

LIM-FLEX (50)
COW
HOMO PLD
DOUBLE BLK
02.20.14
PBRS 422B
LFF 2063043

EF ZEN 344Z

J BAR 7 BARBARA NELL 6416

CJSL WINDFALL 9072W
EF TREND SETTER 206T
BLUEGRASS NEW DESIGN 205
SITZ BARBARAMERE NELL 159

LVLS SECRET WEAPON 4408K
CJ'S MS ARROWHEAD 456P
GPFF BLAQUE RULON
TUBB BLK DAKOTA 304N
BON VIEW NEW DESIGN 1407
BLUEGRASS BONNY 900 505
D H D TRAVELER 6807
SITZ BARBARAMERE NELL 212

| | CED | BW | WW | YW | MA | CEM | SC | ST | DOC | CW | REA | YG | MARB | \$MTI | UFAT | UREA | UIMF |
|-------|-----|-----|----|----|----|-----|------|----|-----|----|------|-------|------|-------|------|------|------|
| EPD | 10 | 0.1 | 54 | 87 | 26 | 8 | 0.29 | - | 18 | 22 | 0.28 | -0.02 | 0.27 | 56.35 | 0.28 | 10.7 | 3.99 |
| %Rank | 25 | 30 | 85 | 65 | 25 | 15 | 90 | - | 60 | 65 | 70 | 80 | 20 | 30 | | | |

- A.I.4.27.15 to OKSU The Profit; P.E. 5.20.15 to 7.28.15 to PBRS Anchor 390A
- Homozygous polled and double black
- An absolutely beautiful phenotypic blend of the mass and stoutness of past Denver Champion, EF Zen with maternal refinement and functionality of J Bar 7 Barbara Nell 416.
- Study this one hard and take her home to add to the donor pen, she has all the right pieces to produce the next great one.
- She is in the top 15% for CEM and top 20% for MB.

16 PBRS Buckets of Beer 483B

LIM-FLEX (50)
COW
HOMO PLD
DOUBLE BLK
03.17.14
PBRS 483B
LFF 2063029

EF ZEN 344Z

CJSL WINDFALL 9072W

EF TREND SETTER 206T

LVLS SECRET WEAPON 4408K

CJ'S MS ARROWHEAD 456P

GPF BLAQUE RULON

TUBB BLK DAKOTA 304N

D H D TRAVELER 6807

COLEMAN EVERELDA ENTENSE

SAV FINAL ANSWER 0035

J BAR 7 LADY BEHAVE 6306

BUFORD LADY BEHAVE 23Y

COLEMAN TRAVELER 749

BUF LADY BEHAVE 8150

| | CED | BW | WW | YW | MA | CEM | SC | ST | DOC | CW | REA | YG | MARB | SMTI | UFAT | UREA | UIMF |
|-------|-----|-----|----|----|----|-----|----|----|-----|----|------|----|------|-------|------|-------|------|
| EPD | 8 | 1.5 | 56 | 85 | 25 | 7 | - | - | - | 22 | 0.23 | 0 | 0.25 | 55.91 | 0.27 | 10.54 | 4.05 |
| %Rank | 40 | 60 | 80 | 70 | 30 | 25 | - | - | - | 65 | 80 | 85 | 25 | 30 | | | |

- A.I. 5.17.15 to RLBH Air Force One; P.E. 5.22.15 to 7.28.15 to PBRS Anchor 390A
- Homozygous Polled and double black
- Her sire, the 2014 National Western Stock Show champion, EF Zen 344Z is siring stout and correct cattle loaded with performance and muscle; he blends perfectly with the highly maternal Angus females we have from Buford Ranches, such as Buford Lady Behave 23Y.
- Dam is an exceptional daughter of the calving ease and marbling specialist, Coleman Traveler 749.



EF Zen 344Z, sire of Lot 16.

17 PBRS Be Lucky 497B

LIM-FLEX (68)
COW
HOMO PLD
HOMO BLK
03.26.14
PBRS 497B
LFF 2064560

EF ZEN 344Z

CJSL WINDFALL 9072W

EF TREND SETTER 206T

LVLS SECRET WEAPON 4408K

CJ'S MS ARROWHEAD 456P

GPF BLAQUE RULON

TUBB BLK DAKOTA 304N

GPF BLAQUE RULON

MAGS PARADISE CANYON

WOODLAWN CHARGE ON 14

EXAR RACHEL 3401

EF YOUR CALL 587Y

MAGS UNLOOSEN

H B 3401 RACHEL 710

| | CED | BW | WW | YW | MA | CEM | SC | ST | DOC | CW | REA | YG | MARB | SMTI | UFAT | UREA | UIMF |
|-------|-----|-----|----|----|----|-----|------|----|-----|----|------|------|------|-------|------|-------|------|
| EPD | 4 | 1.9 | 53 | 92 | 25 | 7 | 0.25 | - | - | 27 | 0.24 | -0.1 | 0.12 | 52.84 | 0.23 | 11.48 | 4.42 |
| %Rank | 85 | 70 | 90 | 55 | 30 | 25 | 90 | - | - | 50 | 75 | 55 | 35 | 40 | | | |

- A.I.4.27.15 to AUTO Lucky Strike; P.E. 5.20.15 to 7.31.15 to PBRS Anchor 390A
- Homozygous polled and homozygous black
- One of the numerous very solid daughters of EF Zen 344Z that we are offering, this one comes to you being tested homozygous polled and homozygous black.
- Her dam is a first class daughter of the great Rulon son, MAGS Unloosen.

18 PBRS Blue Sky 457B

PB LIMOUSIN (93)
COW
DOUBLE PLD
DOUBLE BLK
03.04.14
PBRS 457B
NPF 2063048

MAGS ZAMINDAR

BOHI TOP DOLLAR 7144T

MAGS TAVISH

AUTO DOLLAR GENERAL 122R

CARROUSELS PINA COLADA

DHVO DEUCE 132R

MAGS PUDDLES

CARROUSELS PURE POWER

WULFS MYRENE 2332M

JCL LODESTAR 27L

DFLC HBPC 25L

DPBN VEGAS 1W

WULFS SHOP TALK 2332S

DFLC HBPC 1S

| | CED | BW | WW | YW | MA | CEM | SC | ST | DOC | CW | REA | YG | MARB | SMTI | UFAT | UREA | UIMF |
|-------|-----|-----|----|----|----|-----|------|----|-----|----|------|-------|------|-------|------|-------|------|
| EPD | 6 | 0.5 | 59 | 86 | 24 | 7 | 0.61 | - | - | 21 | 0.28 | -0.07 | 0.19 | 55.26 | 0.23 | 10.57 | 4.04 |
| %Rank | 65 | 35 | 65 | 70 | 40 | 25 | 50 | - | - | 70 | 70 | 65 | 30 | 35 | | | |

- A.I.4.26.15 to AUTO Lucky Strike; P.E. 5.20.15 to 7.28.15 to PBRS Anchor 390A
- Double polled and double black
- MAGS Zamindar was promoted as a purebred sire prospect that was soft middled and structured yet had the performance and thickness that is expected. PBRS Blue Sky 457B is the perfect result that we were hoping for.
- Her dam is a proven calving ease producer for us.
- Particularly smooth patterned and well balanced from the profile.



Lot 18

19 PBRS Bad Breakup 426B

LIM-FLEX (50)
COW
HOMO PLD
DOUBLE BLK
02.22.14
PBRS 426B
LFF 2063062

MAGS ZAMINDAR

BOHI TOP DOLLAR 7144T

MAGS TAVISH

BT CHLOE 70R

SUMMITCRESTHIGHPRIME 0H29

BT CHLOE 420N

AUTO DOLLAR GENERAL 122R
CARROUSELS PINA COLADA
DHVO DEUCE 132R
MAGS PUDDLES
GARDENS PRIME TIME
SUMMITCREST MISSIE 2F55
SITZ ALLIANCE 8199
BT CHLOE 62K

| | CED | BW | WW | YW | MA | CEM | SC | ST | DOC | CW | REA | YG | MARB | \$MTI | UFAT | UREA | UIMF |
|-------|-----|------|----|----|----|-----|----|----|-----|----|------|-------|------|-------|------|------|------|
| EPD | 9 | -1.2 | 52 | 81 | 25 | 8 | - | - | - | 16 | 0.15 | -0.06 | 0.52 | 65.14 | 0.16 | 9.93 | 5.07 |
| %Rank | 30 | 15 | 90 | 80 | 30 | 15 | - | - | - | 85 | 90 | 70 | 5 | 10 | | | |

- A.I. 5.13.15 to MAGS Eagle; P.E. 5.20.15 to 7.28.15 to PBRS Anchor 390A
- Homozygous Polled and double black
- Check out the marbling and \$MTI influence that this fine young female could bring into your breeding program. She ranks in the top 5% of the Lim-Flex population for MB epd and in the top 10% for \$MTI epd.
- Dam is an absolutely beautiful Angus cow, one that we are very fond of.

20 PBRS Bridled 499B

PB LIMOUSIN (87)
COW
DOUBLE PLD
DOUBLE BLK
03.27.14
PBRS 499B
NPF 2063032

MAGS ZAMINDAR

BOHI TOP DOLLAR 7144T

MAGS TAVISH

KRVN TRES 157T

JCL LODESTAR 27L

KRVN REANNA 329R

AUTO DOLLAR GENERAL 122R
CARROUSELS PINA COLADA
DHVO DEUCE 132R
MAGS PUDDLES
HUNTS HI-LITER 245G
LOGAN'S CHEERLEADER 280G
CHR KING DIAMOND
KRVN 912L

| | CED | BW | WW | YW | MA | CEM | SC | ST | DOC | CW | REA | YG | MARB | \$MTI | UFAT | UREA | UIMF |
|-------|-----|-----|----|-----|----|-----|------|----|-----|----|------|-----|------|-------|------|-------|------|
| EPD | 5 | 2.9 | 77 | 112 | 26 | 4 | 0.65 | - | - | 40 | 0.12 | 0.1 | 0.18 | 58.87 | 0.44 | 11.42 | 4.85 |
| %Rank | 75 | 90 | 5 | 15 | 25 | 75 | 50 | - | - | 10 | 95 | >95 | 30 | 25 | | | |

- A.I.4.21.15 to Air Force One; P.E. 5.20.15 to 7.31.15 to PBRS Anchor 390A
- Double Polled and double black
- For those of you looking for solid cattle that excel in growth and carcass, here is a legitimate option for you. 499B absolutely hit it out of the park with her ultrasound data. Study these ratios: 107 REA, 97 FT and 132 IMF.
- In addition to her killer scan data, she ratio'd 119 at weaning and 112 at yearling.
- Her dam is a very impressive daughter of JCL Lodestar.

21 PBRS Backboard 484B

LIM-FLEX (50)
COW
HOMO PLD
DOUBLE BLACK
03.17.14
PBRS 484B
LFF 2063030

MAGS ZAMINDAR

BOHI TOP DOLLAR 7144T

MAGS TAVISH

BUFORD BARBARA 9189

S A V BISMARCK 7410

J BAR 7 BARBARA 7142

AUTO DOLLAR GENERAL 122R
CARROUSELS PINA COLADA
DHVO DEUCE 132R
MAGS PUDDLES
S A V BISMARCK 5682
S A V EMBLYNETTE 4117
S A V 8180 TRAVELER 004
J BAR 7 JULIE JAN 408

| | CED | BW | WW | YW | MA | CEM | SC | ST | DOC | CW | REA | YG | MARB | \$MTI | UFAT | UREA | UIMF |
|-------|-----|-----|----|----|----|-----|----|----|-----|----|------|------|------|-------|------|------|------|
| EPD | 8 | 1.1 | 62 | 94 | 50 | 10 | - | - | - | 27 | 0.25 | 0.04 | 0.51 | 66.91 | 0.41 | 10.3 | 5.56 |
| %Rank | 40 | 50 | 55 | 50 | 10 | 15 | - | - | - | 50 | 75 | 95 | 10 | 10 | | | |

- A.I.4.27.15 to Air Force One; P.E. 5.20.15 to 7.28.15 to PBRS Anchor 390A
- Homozygous polled and double black
- The impact that our famed A.I. and herd sire, MAGS Zamindar has had on our Angus cows totally exceeded our expectations. Consequently, due to the amount of "good ones" he produced we are able to offer females like this.
- PBRS Backboard 484B comfortably ranks in the top 10 of the breed for the ever so important \$MTI trait.
- Milk and marbling specialist in this dynamic female.

22 PBRS Bank Note 493B

LIM-FLEX (50)
COW
HOMO PLD
DOUBLE BLK
03.24.14
PBRS 493B
LFF 2064559

MAGS ZAMINDAR

BOHI TOP DOLLAR 7144T

MAGS TAVISH

OAK HILL MISS WIX 72S

S A V 8180 TRAVELER 004

OAK HILL MISS WIX 9402

AUTO DOLLAR GENERAL 122R
CARROUSELS PINA COLADA
DHVO DEUCE 132R
MAGS PUDDLES
SITZ TRAVELER 8180
BOYD FOREVER LADY 8003
N BAR EMULATION EXT
HOMESTRETCH MISS WIX 663

| | CED | BW | WW | YW | MA | CEM | SC | ST | DOC | CW | REA | YG | MARB | \$MTI | UFAT | UREA | UIMF |
|-------|-----|-----|----|-----|----|-----|------|----|-----|----|-------|------|------|-------|------|------|------|
| EPD | 7 | 1.3 | 56 | 100 | 24 | 8 | 0.89 | - | - | 32 | -0.14 | 0.11 | 0.35 | 60.66 | 0.37 | 10.6 | 4.73 |
| %Rank | 50 | 55 | 80 | 35 | 80 | 15 | 25 | - | - | 30 | >95 | >95 | 15 | 20 | | | |

- P.E. 5.20.15 to 7.31.15 to PBRS Anchor 390A
- Homozygous polled and double black
- We often find ourselves saying to one another, "I wish that we had a hundred cows just like her," when we are discussing the very special dam of PBRS Bank Note 493B. This is your opportunity to tap into the genetic greatness of the Oak Hill Miss Wix cow family.
- Like with our other Zamindar / Angus matings, this one also produced an exceptional individual in PBRS Bank Note 493B.



Oak Hill 72S, dam of Lot 22.

23 PBRS Blank Check 470B

LIM-FLEX (50)
COW
HOMO PLD
HOMO BLK
03.09.14
PBRS 470B
LFF 2064124

BOHI TOP DOLLAR 7144T
AUTO DOLLAR GENERAL 122R
CARROUSELS PINA COLADA
S A V 8180 TRAVELER 004
SITZ EPPIONIA 534

BUF EPPIONIA 7307
LVLS SECRET WEAPON 4408K
AUTO KYRIA 232K
AUTO BLACK DAKOTA 129J
ELMW GINNIE P58G
SITZ TRAVELER 8180
BOYD FOREVER LADY 8003
O C C GREAT PLAINS 943G
SITZ EPPIONIA 1632

| | CED | BW | WW | YW | MA | CEM | SC | ST | DOC | CW | REA | YG | MARB | SMTI | UFAT | UREA | UIMF |
|-------|-----|-----|----|-----|----|-----|------|----|-----|----|------|------|------|-------|------|-------|------|
| EPD | 6 | 1.6 | 59 | 101 | 27 | 9 | 0.86 | 10 | 17 | 32 | 0.47 | 0.24 | 0.89 | 66.94 | 0.33 | 13.92 | 6.83 |
| %Rank | 65 | 60 | 65 | 35 | 20 | 10 | 25 | 95 | 65 | 30 | 30 | >95 | 1 | 10 | | | |

- A.I. 5.20.15 to MAGS Eagle; P.E. 5.22.15 to 7.28.15 to PBRS Anchor 390A
- Homozygous polled and homozygous black
- This blank check and her sisters may be just the solution to your future needs in the beef industry. Extreme mating flexibility with her homo/homo genetics and the fact that she is a breed trait leader for MB epd. Very exciting options with this high quality female.
- You cannot design donor prospects with a more ideal look than these particular heifers, neat fronted, big middled, stout hipped and ideal in her foot and bone work just like her SAV 8180 Traveler 004 dam.
- BUF Eppionia 7307 has not only produced some of the very finest Lim-Flex cattle in our system here at P Bar S, she has had a great deal of success in the Angus breed. She was so missed at Buford Ranches, they came back and bought the rights to flush her in our 2010 sale, resulting progeny are now producing in Angus herds throughout the nation.
- They are direct daughters of BOHI Top Dollar, the high growth and high milk sire of many great ones including our resident herd sire, MAGS Zamindar.



Lot 23



BOHI Top Dollar, sire to Lots 23 - 25.

24 PBRS Believe Me 447B

LIM-FLEX (50)
COW
HOMO PLD
HOMO BLKO
03.02.14
PBRS 447B
LFF 2064561

BOHI TOP DOLLAR 7144T
AUTO DOLLAR GENERAL 122R
CARROUSELS PINA COLADA
S A V 8180 TRAVELER 004
SITZ EPPIONIA 534

BUF EPPIONIA 7307
LVLS SECRET WEAPON 4408K
AUTO KYRIA 232K
AUTO BLACK DAKOTA 129J
ELMW GINNIE P58G
SITZ TRAVELER 8180
BOYD FOREVER LADY 8003
O C C GREAT PLAINS 943G
SITZ EPPIONIA 1632

| | CED | BW | WW | YW | MA | CEM | SC | ST | DOC | CW | REA | YG | MARB | SMTI | UFAT | UREA | UIMF |
|-------|-----|-----|----|-----|----|-----|------|----|-----|----|-----|------|------|-------|------|-------|------|
| EPD | 6 | 1.3 | 61 | 101 | 27 | 9 | 0.86 | 10 | 17 | 32 | 0.4 | 0.13 | 0.46 | 66.94 | 0.34 | 13.48 | 4.8 |
| %Rank | 65 | 55 | 60 | 35 | 20 | 10 | 25 | 95 | 65 | 30 | 45 | >95 | 10 | 10 | | | |

- A.I. 5.8.15 to AUTO Lucky Strike; P.E. 5.20.15 to 7.28.15 to PBRS Anchor 390A
- Homozygous polled and homozygous black
- BUF Eppionia 7307 has not only produced some of the very finest Lim-Flex cattle in our system here at P Bar S, she has had a great deal of success in the Angus breed. She was so missed at Buford Ranches, they came back and bought the rights to flush her in our 2010 sale, resulting progeny are now producing in Angus herds throughout the nation.
- They are direct daughters of BOHI Top Dollar, the high growth and high milk sire of many great ones including our resident herd sire, MAGS Zamindar.

25 PBRS Butter Scotch 448B

LIM-FLEX (50)
COW
HOMO PLD
HOMO BLKO
03.03.14
PBRS 448B
LFF 2064122

BOHI TOP DOLLAR 7144T
AUTO DOLLAR GENERAL 122R
CARROUSELS PINA COLADA
S A V 8180 TRAVELER 004
SITZ EPPIONIA 534

BUF EPPIONIA 7307
LVLS SECRET WEAPON 4408K
AUTO KYRIA 232K
AUTO BLACK DAKOTA 129J
ELMW GINNIE P58G
SITZ TRAVELER 8180
BOYD FOREVER LADY 8003
O C C GREAT PLAINS 943G
SITZ EPPIONIA 1632

| | CED | BW | WW | YW | MA | CEM | SC | ST | DOC | CW | REA | YG | MARB | SMTI | UFAT | UREA | UIMF |
|-------|-----|-----|----|-----|----|-----|------|----|-----|----|------|------|------|-------|------|-------|------|
| EPD | 6 | 1.6 | 53 | 101 | 27 | 9 | 0.86 | 10 | 17 | 32 | 0.36 | 0.03 | 0.36 | 66.94 | 0.23 | 13.21 | 4.3 |
| %Rank | 65 | 60 | 90 | 35 | 20 | 10 | 25 | 95 | 65 | 30 | 50 | 90 | 15 | 10 | | | |

- A.I. 5.5.15 to RLBH Air Force One; P.E. 5.20.15 to 7.28.15 to PBRS Anchor 390A
- \$MTI is so very important and accurate, PBRS Butterscotch 448B is a great option to improve \$MTI in your system. She posts a 66 \$MTI, which positions her nicely in the exclusive top 10% of the breed.
- Sired by Bohi Top Dollar who is an industry leader who offers much maternal strength and a proven pedigree.
- These masterfully mated sisters have been specifically bred to bulls that will truly complement their phenotypic and genotypic needs.

26 PBRS Brickroad 42B

LIM-FLEX (50)
COW
HOMO PLD
HOMO BLK
01.18.14
PBRS 42B
LFF 2058326

CALO BRICKYARD 902W
SCHILLING'S TALLADEGA
EXG E839 1407 M175 LS
EF MAIN STAY 541M
TWIN EAGLESBEMINDMAID638K

MAGS REVA
KRVN NASKAR 013N
RCSX RAINY DAY 80R
BON VIEW NEW DESIGN 1407
PAF 4019 6807 E839
AUTO BLACK DAKOTA 129J
EXLR 231J
GAR PRECISION 1680
VF 1483 BEMINDFULMAID7025

| | CED | BW | WW | YW | MA | CEM | SC | ST | DOC | CW | REA | YG | MARB | SMTI | UFAT | UREA | UIMF |
|-------|-----|-----|-----|----|----|-----|------|----|-----|----|------|-------|------|-------|------|------|------|
| EPD | 10 | 0.4 | 42 | 70 | 20 | 4 | 0.20 | 13 | 10 | 12 | 0.42 | -0.14 | 0.22 | -0.01 | 0.30 | 6.64 | 0.31 |
| %Rank | 25 | 35 | >95 | 95 | 75 | 75 | 90 | 75 | 90 | 40 | 95 | 40 | 25 | 70 | | | |

- A.I. 4.28.15 to RLBH Air Force One; P.E. 5.22.15 to 7.28.15 to PBRS Anchor 390A
- Brickroad 42B looks very much like her dam, big bodied and powerfully constructed.
- Own daughters of P Bar S donor, MAGS Reva 3383R, the super scanning daughter of past reserve national champion EF Main Stay.
- There inherited good looks apparently comes from both sides of her pedigree, her sire CALO Brickyard is also a past national champion for JCL and Abele.



Lot 27



CALO Brickyard 902W,
sire of Lots 26 & 27.

27 PBRS Bricktown 41B

LIM-FLEX (50)
COW
HOMO PLD
HOMO BLK
01.15.14
PBRS 41B
LFF 2058325

CALO BRICKYARD 902W

SCHILLING'S TALLADEGA
EXG E839 1407 M175 LS

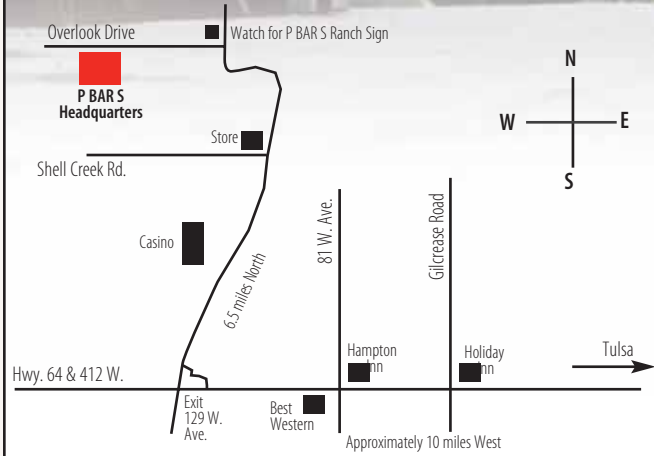
MAGS REVA

EF MAIN STAY 541M
TWIN EAGLESBEMINDMAID638K

KRVN NASKAR 013N
RCSX RAINY DAY 80R
BON VIEW NEW DESIGN 1407
PAF 4019 6807 E839
AUTO BLACK DAKOTA 129J
EXLR 231J
GAR PRECISION 1680
VF 1483 BEMINDFULMAID7025

| | CE | BW | WW | YW | MA | CEM | SC | ST | DOC | CW | REA | YG | MARB | SMTI | UFAT | UREA | UIMF |
|-------|----|------|-----|----|----|-----|-----|----|-----|----|------|------|------|-------|------|-------|------|
| EPD | 10 | -0.9 | 39 | 70 | 20 | 4 | 0.2 | 13 | 10 | 12 | 0.18 | -0.1 | 0.16 | 50.53 | 0.25 | 11.25 | 4.39 |
| %Rank | 25 | 15 | >95 | 95 | 75 | 75 | 90 | 75 | 90 | 95 | 85 | 55 | 30 | 60 | | | |

- A.I. 5.20.15 to RLBH Air Force One; P.E. 5.22.15 to 7.28.15 to PBRS Anchor 390A
- Bricktown 41B is an exquisite female who is the favorite of many who come to the ranch, she is the favorite of the cattleman and women who want their "females to look like females." Come sale day when you have the opportunity to see this special creation in person, you too will appreciate her maternal look.



Directions:
From Tulsa, OK - Take Hwy. 64 - 412 West to Sand Springs. Exit at 129 W. Ave. and follow map.

From Oklahoma City, OK - Turnpike I-44 to Sapulpa Exit, Hwy. 97; got North to Sand Springs; cross over Ark River Bridge and take Hwy. 6 & 412 West 1 mile to Exit 129 W. Ave. and follow map.



Morris

Lot 28

28 P Bar S 434

PB ANGUS
COW
HOMO PLD
HOMO BLK
02.24.14
434
AAA 17988763

S A V FINAL ANSWER 0035
WERNER FINAL ANSWER 0268
LONE OAKS FOREVER LADY 8123

BUFORD ERISKAY 225Z
BOHI TRAVELER 6134
J BAR 7 ERISKAY 7112

SITZ TRAVELER 8180
S A V EMULOUS 8145
C R A BEXTOR 872 5205 608
S V F FOREVER LADY 170E
S A V 8180 TRAVELER 004
THOMAS ERICA 3499
CONNELY LEAD ON
J BAR 7 ERISKAY Q13-71K1

| | CED | BW | WW | YW | MA | CEM | SC | ST | DOC | CW | REA | YG | MARB | SMTI | UFAT | UREA | UIMF |
|-------|-----|-----|----|----|----|-----|----|----|-----|----|------|------|------|------|------|------|------|
| EPD | 9 | 0.1 | 43 | 99 | 21 | 12 | - | - | - | 32 | 0.64 | 0.04 | 0.50 | - | - | - | - |
| %Rank | 24 | 33 | 23 | 15 | 8 | 10 | - | - | - | 5 | 5 | 5 | 5 | - | - | - | - |

- A.I. 4.27.15 to JCL Lodestar 27L; P.E. 5.05.15 to 7.07.15 to PBRS Brewed Cold 441B
- One thing you can always count on at P Bar S Ranch is there will always be some great Angus females at the Ranch and then highlighted at their annual sale. This female proudly represents the strength in their Angus breeding program and I think you will be very pleased with what she has to offer
- She is sired by the SAV Final Answer son Werner Final Answer 0268 and is from a granddaughter of SAV 8180 Traveler 004 back to a daughter of Connealy Lead On
- She posts a .50 for marbling, .64 for REA and 114.81 for \$B
- We cant say enough good things about her picture perfect profile, admirable design and her very prominent stance
- Buy with confidence when you consider this young heifer. She will forever be a purebred Angus female and future donor cow but very easily can be bred anyway that you wish



Morris

Lot 29

29 P Bar S 440

PB ANGUS
COW
HOMO PLD
HOMO BLK
02.27.14
440
AAA 17988764

S A V FINAL ANSWER 0035
WERNER FINAL ANSWER 0268
LONE OAKS FOREVER LADY 8123
BUFORD LUCY 224Z
BUSHES TROOPER 402
BROOKFIELD LUCY 7026

SITZ TRAVELER 8180
S A V EMULOUS 8145
C R A BEXTOR 872 5205 608
S V F FOREVER LADY 170E
S A V BISMARCK 5682
BUSHES LADY 7702
WULFFS EXT 6106
COLEMAN LUCY 359

| | CED | BW | WW | YW | MA | CEM | SC | ST | DOC | CW | REA | YG | MARB | SMTI | UFAT | UREA | UIMF |
|-------|-----|------|----|-----|----|-----|----|----|-----|----|------|------|------|------|------|------|------|
| EPD | 12 | -0.4 | 49 | 104 | 22 | 14 | - | - | - | 25 | 0.65 | 0.53 | 0.34 | - | - | - | - |
| %Rank | 24 | 33 | 23 | 15 | 8 | 10 | - | - | - | 5 | 5 | 5 | 5 | - | - | - | - |

- A.I. 4.28.15 to AUTO Lucky Strike; P.E. 5.05.15 to 7.07.15 to PBRS Brewed Cold 441B
- This first calf heifer posts a .53 for marbling and .66 for ribeye
- She is a daughter of Werner Final Answer 0268 and back to a granddaughter of SAV Final Answer
- If you like your females like we do then you will certainly love this one! She is very clean and appealing up through her front end, smooth in her neck/shoulder junction and has tremendous length of body and performance. We really admire her depth of flank and the amount of mass and performance she has
- This is one terrific brood cow in the making and for sure once she has her first calf some program's next lead donor

30 P Bar S 410

PB ANGUS
COW
HOMO PLD
HOMO BLK
02.06.14
410
AAA 17988775

MF NET RETURN 8197
BUFORD RANCH HAND Y194
J BAR 7 BLACKBIRD 7209
BUFORD LUCY 212Z
J BAR 7 LUCY 6155

S A V 8180 TRAVELER 004
S A V MAY 2436
RITO 616 OF 4B20 6807
J BAR 7 AUDREY 5443
D H D TRAVELER 6807
COLEMAN EVERELDA ENTENSE4107
SITZ TRADITION RLS 8702
E F LUCY 237

| | CED | BW | WW | YW | MA | CEM | SC | ST | DOC | CW | REA | YG | MARB | SMTI | UFAT | UREA | UIMF |
|-------|-----|-----|----|----|----|-----|----|----|-----|----|-----|----|------|------|------|------|------|
| EPD | 2 | 2.7 | 44 | 86 | 25 | 8 | - | - | - | - | - | - | - | - | - | - | - |
| %Rank | 28 | 33 | 25 | 19 | 10 | 6 | - | - | - | - | - | - | - | - | - | - | - |

- A.I. 4.28.15 to JCL Lodestar 27L; P.E. 5.5.15 to 7.7.15 to PBRS Brewed Cold 441B
- An own daughter of the Genex A.I. sire Buford Ranch Hand Y194.
- Homozygous polled and homozygous black
- This purebred Angus female is moderate in her frame score, easy in her condition and very easy in her condition
- We love the design and conformation of this heifer and think that she is one of the really nice Angus females offered in the sale



Morris

Lot 31

31 P Bar S Focus 311

PB ANGUS
COW
HOMO PLD
HOMO BLK
12.19.13
311
AAA 17855647

MYTTY IN FOCUS

LVLS ZELDA 8212Z

S A F FOCUS OF E R

MYTTY COUNTESS 906

S A V NET WORTH 4200

LVLS 8212R

S A F FAME
G D A R FOREVER LADY 246
SITZ ALLIANCE 6595
BALDRIDGE COUNTESS 357
S A V 8180 TRAVELER 004
S A V MAY 2410
CONNELY LEAD ON
SILVER OAK VINTAGE 807

| | CED | BW | WW | YW | MA | CEM | SC | ST | DOC | CW | REA | YG | MARB | SMTI | UFAT | UREA | UIMF |
|-------|-----|-----|----|----|----|-----|----|----|-----|----|-----|----|------|------|------|------|------|
| EPD | 8 | 0.8 | 50 | 93 | 26 | 11 | - | - | - | - | - | - | - | - | - | - | - |
| %Rank | 5 | 5 | 5 | 5 | 5 | 5 | - | - | - | - | - | - | - | - | - | - | - |

- Observed bred 4.27.15 to ELCX Turning Point; P.E. 5.05.15 to 7.07.15 to PBRS Brewed Cold 441B
- There is a reason this purebred Angus female is so good ... she is suppose to be! She is a daughter of MYTTY In Focus and from a daughter of SAV Net Worth back to a daughter of Connealy Lead On
- This first calf heifer has femininity written all over her. She is very clean and pretty up through her front end, very strong and level from her hooks to her pens and stands very structurally correct and sound made
- She is plenty thick enough, desirable in her conformation and very appealing from every angle

32 P Bar S 416

PB ANGUS
COW
HOMO PLD
HOMO BLK
02.12.14
416
AAA 17988635

BUFORD RANCH HAND Y194

BUFORD ERICA 263Z

MF NET RETURN 8197

J BAR 7 BLACKBIRD 7209

COLEMAN TRAVELER 716

WCC ERICA 8123

S A V 8180 TRAVELER 004
S A V MAY 2436
RITO 616 OF 4B20 6807
J BAR 7 AUDREY 5443
D H D TRAVELER 6807
COLEMAN EVERELDA ENTENSE 429
S A V FINAL ANSWER 0035
SEDGWICKS ERICA 1123

| | CED | BW | WW | YW | MA | CEM | SC | ST | DOC | CW | REA | YG | MARB | SMTI | UFAT | UREA | UIMF |
|-------|-----|-----|----|----|----|-----|----|----|-----|----|------|------|------|------|------|------|------|
| EPD | 6 | 1.8 | 46 | 84 | 24 | 9 | - | - | - | 23 | 0.58 | 0.02 | 0.52 | - | - | - | - |
| %Rank | 28 | 35 | 26 | 20 | 10 | 6 | - | - | - | 5 | 5 | 5 | 5 | - | - | - | - |

- A.I. 4.27.15 to JCL Lodestar 27L; P.E. 5.5.15 to 7.7.15 to PBRS Brewed Cold 441B
- A highly predictable genetic package here in P Bar S 416, as she precisely combines the strengths of such Angus legends as Traveler 004, 616, Final Answer and 6807. Her lineage reads like a who's who of influential Angus.
- The Sedgwicks Erica cow family may possibly be one of the most versatile F1 makers in the beef industry. Proven success when mated with Limousin, Simmentals and in the show cattle industry.



Morris

Lot 33

33 PBRS Agenda 3164A

LIM-FLEX (50)
COW
HOMO PLD
DOUBLE BLK
09.05.13
PBRS 3164A
LFF 2048716

MAGS YIP

BOHI SHAWNEE 8265

MAGS THE GENERAL
AUTO CARMINDA 656S
S S OBJECTIVE T510 OT26
LBAF SHAWNEE 602

AUTO DOLLAR GENERAL 122R
EXLR LUVLY 821M
JCL LODESTAR 27L
AUTO CARMINDA 872P
SS TRAVELER 6807 T510
S S MISS RITA R011 7R8
TWIN VALLEY PRECISIONE161
SUNSET SHAWNEE 390S

| | CED | BW | WW | YW | MA | CEM | SC | ST | DOC | CW | REA | YG | MARB | SMTI | UFAT | UREA | UIMF |
|-------|-----|-----|----|-----|----|-----|------|----|-----|----|------|------|------|-------|------|-------|------|
| EPD | 10 | 0.5 | 68 | 117 | 29 | 8 | 0.47 | 12 | 2 | 40 | 0.14 | 0.07 | 0.6 | 72.71 | 0.3 | 10.67 | 4.92 |
| %Rank | 25 | 35 | 30 | 10 | 10 | 15 | 75 | 85 | >95 | 10 | 90 | 95 | 3 | 3 | | | |

- A.I. 12.04.14 to OKSU The Profit; P.E. 12.29.14 to 2.10.15 to PBRS Anchor 390A
- Double black and homozygous polled
- Wowza!!!! What a deal and what an amazing fall bred first calf heifer we have here
- Sired by MAGS Yip and from a purebred Angus female and daughter of SS Objective T510 OT26
- This big ribbed and capacious female is really something special
- She is made as perfect as you would ever want and just darn near perfect
- We love her foundation, her soft pasterns, her fluid movement and overall mass
- She ranks in the top 10% of the breed for yearling weight, milk, total maternal and carcass weight. She also ranks in the top 3% of the breed for marbling and \$MTI
- She also scanned a 4.920 for marbling and 10.67 for ribeye

34 PBRS Adele 3156A

PB LIMOUSIN (100)
COW
DOUBLE PLD
HOMO BLK
09.04.13
PBRS 3156A
NPF 2048724

MAGS YIP

AUTO SHAMELESS 417S

MAGS THE GENERAL
AUTO CARMINDA 656S
CLLL NEW DIRECTION 394P
TOP MEADOW 109J

AUTO DOLLAR GENERAL 122R
EXLR LUVLY 821M
JCL LODESTAR 27L
AUTO CARMINDA 872P
GPFF BLAQUE RULON
PRRK EXTRA BLAQUE STAR
EXLR DAKOTA 353G
NP SHAMELESS HUSSEY 2037G

| | CED | BW | WW | YW | MA | CEM | SC | ST | DOC | CW | REA | YG | MARB | SMTI | UFAT | UREA | UIMF |
|-------|-----|-----|----|-----|----|-----|------|----|-----|----|-------|------|------|-------|------|-------|------|
| EPD | 4 | 1.9 | 65 | 100 | 6 | 5 | 0.43 | 16 | 4 | 32 | -0.06 | 0.05 | 0.13 | 54.12 | 0.29 | 11.65 | 3.88 |
| %Rank | 85 | 70 | 40 | 35 | 25 | 60 | 75 | 40 | >95 | 30 | >95 | 95 | 35 | 40 | | | |

- A.I. 12.16.14 to OKSU The Profit; P.E. 12.29.14 to 2.10.15 to PBRS Anchor 390A
- Double polled and homozygous black
- Here is a purebred Limousin female that is very well bred with a very predictable pedigree
- She is sired by the popular MAGS Yip and from a daughter of CLLL New Direction 394P from the once \$50,000 valued donor Shamless Dakota
- This purebred heifer is solid in her performance, well above average in her EPD profile and very appealing in her profile
- Given the extreme cattle market, we suggest maybe cull your older cows and consider females of this caliber



Morris

Lot 37

35 PBRS Ally 3153A

LIM-FLEX (50)
COW
HOMO PLD
DOUBLE BLK
09.03.13
PBRS 3153A
LFF 2048744

JCL LODESTAR 27L

P BAR S 1011

HUNTS HI-LITER 245G

LOGAN'S CHEERLEADER 280G

S A V NET WORTH 4200

BOHI RITA 8301

WADDLES COBALT 3106

TNUH MISS C245

COLE FIRST DOWN 46D

TGCC CONFIDENCE MAKER

S A V 8180 TRAVELER 004

S A V MAY 2410

G A R PREDESTINED

C&H RITA 5100

| | CED | BW | WW | YW | MA | CEM | SC | ST | DOC | CW | REA | YG | MARB | SMTI | UFAT | UREA | UIMF |
|-------|-----|-----|----|-----|----|-----|------|----|-----|----|------|------|------|-------|------|-------|------|
| EPD | 11 | 0.3 | 74 | 126 | 24 | 8 | 0.78 | - | 15 | 45 | 0.39 | 0.05 | 0.65 | 75.89 | 0.3 | 13.32 | 4.34 |
| %Rank | 15 | 35 | 10 | 2 | 40 | 15 | 40 | - | 70 | 3 | 45 | 95 | 2 | 2 | | | |

- P Bar S retains 1/2 embryo interest.
- A.I. 12.14.14 to LH U Haul; P.E. 12.29.14 to 2.10.15 to PBRS Anchor 390A
- Double black and homozygous polled
- Here is a great one in the making! Wow! PBRS Ally 3153A represents a mating that seems to work as good as any in the business. The blending of JCL Lodestar 27L with Angus females hits time and time again in our breed and this heifer represents that mating very well
- She scanned a 13.32 for ribeye and 4.34 for marbling
- This young heifer ranks in the top 2% of the breed in yearling weight, marbling and \$MTI. She also ranks in the top 3% for carcass weight and top 10% for weaning weight
- This young heifer is so complete in her profile, straight in her lines, square out of her hip, sound made and very capacious

36 PBRS Alice 3126A

LIM-FLEX (50)
COW
HOMO PLD
DOUBLE BLK
08.22.13
PBRS 3126A
LFF 2048743

JCL LODESTAR 27L

P BAR S 1029

HUNTS HI-LITER 245G

LOGAN'S CHEERLEADER 280G

S A V NET WORTH 4200

J BAR 7 ENCHANTRESS 331

WADDLES COBALT 3106

TNUH MISS C245

COLE FIRST DOWN 46D

TGCC CONFIDENCE MAKER

S A V 8180 TRAVELER 004

S A V MAY 2410

SITZ VISION 5646

J BAR 7 MISS BIG TIME 90F

| | CED | BW | WW | YW | MA | CEM | SC | ST | DOC | CW | REA | YG | MARB | SMTI | UFAT | UREA | UIMF |
|-------|-----|------|----|-----|----|-----|----|----|-----|----|------|------|------|-------|------|-------|------|
| EPD | 11 | -0.6 | 65 | 109 | 24 | 7 | - | - | - | 34 | 0.26 | 0.04 | 0.42 | 64.85 | 0.32 | 13.43 | 3.44 |
| %Rank | 15 | 20 | 40 | 15 | 40 | 25 | - | - | - | 25 | 70 | 95 | 10 | 15 | | | |

- A.I. 12.09.14 to LH U Haul; P.E. 12.29.14 to 2.10.15 to PBRS Anchor 390A
- Double black and homozygous polled
- Here is a powerful brood cow in the making and one that is very well bred
- She represents the blending of JCL Lodestar 27L with a purebred Angus daughter of SAV Net Worth
- PBRS Alice 3126A scanned a 13.43 for ribeye and 3.44 for marbling
- This 50% Lim-Flex heifer ranks in the top 10% for marbling, top 15% for calving ease, yearling weight and \$MTI



Lot 37



Lot 38

37 PBRS Accounted For 3133A

LIM-FLEX (50)
COW
HOMO PLD
DOUBLE BLK
08.28.13
PBRS 3133A
LFF 2048739

JCL LODESTAR 27L

P BAR S 1032

HUNTS HI-LITER 245G

LOGAN'S CHEERLEADER 280G

S A V NET WORTH 4200

SEDGWICKS BARBARA 2867

WADDLES COBALT 3106

TNUH MISS C245

COLE FIRST DOWN 46D

TTCC CONFIDENCE MAKER

S A V 8180 TRAVELER 004

S A V MAY 2410

GDAR SVF TRAVELER 234D

SEDGWICKS BARBARA 8677

| | CED | BW | WW | YW | MA | CEM | SC | ST | DOC | CW | REA | YG | MARB | SMTI | UFAT | UREA | UIMF |
|-------|-----|----|----|-----|----|-----|------|----|-----|----|-----|-------|------|------|------|-------|------|
| EPD | 11 | 0 | 64 | 107 | 25 | 7 | 0.74 | - | 14 | 34 | 0.4 | -0.02 | 0.44 | 65.6 | 0.21 | 10.88 | 3.95 |
| %Rank | 15 | 25 | 45 | 20 | 30 | 25 | 40 | - | 75 | 25 | 45 | 80 | 10 | 10 | | | |

- A.I. 12.05.14 to LH U Haule 135U; P.E. 12.29.14 to 2.10.15 to PBRS Anchor 390A
- Double black and homozygous polled
- This feminine fronted, long bodied and very maternal looking first calf heifer is one of the top lots of the sale
- She is sired by the multiple trait leading sire JCL Lodestar 27L and from a purebred Angus daughter of SAV Net Worth
- This first calf heifer is solid in her EPD profile, scanned a 3.95 for marbling and certainly has the

38 PBRS Ava 3134A

LIM-FLEX (50)
COW
HOMO PLD
DOUBLE BLK
08.28.13
PBRS 3134A
LFF 2048730

MAGS Y-AXIS

PBRS MISS 083X

TC ABERDEEN 759

MAGS UAHUKA

MAGS SCOTLAND

LH RICKET 363R

C R A BEXTOR 872 5205 608

TC BLACKBIRD 4034

DHVO DEUCE 132R

CARROUSELS PINA COLADA

BR MIDLAND

MAGS MARQUEE

GPFF BLAQUE RULON

VERMILION EVERGREEN 0073

| | CED | BW | WW | YW | MA | CEM | SC | ST | DOC | CW | REA | YG | MARB | SMTI | UFAT | UREA | UIMF |
|-------|-----|------|----|----|----|-----|------|----|-----|----|------|-------|------|-------|------|------|------|
| EPD | 11 | -0.1 | 59 | 94 | 20 | 9 | 0.78 | - | 19 | 26 | 0.57 | -0.17 | 0.1 | 53.04 | 0.36 | 13.2 | 4.45 |
| %Rank | 15 | 25 | 65 | 50 | 75 | 10 | 40 | - | 55 | 50 | 15 | 30 | 40 | 40 | | | |

- A.I. 12.05.14 to MAGS Eagle; P.E. 12.29.14 to 2.10.15 to PBRS Anchor 390A
- Double black and homozygous polled
- Here is big league donor cow in the making! She is very moderate in her frame score, easy in her condition and extremely deep bodie
- We love and appreciate Lim-Flex females like PBRS Ava 3134A. Her sire MAGS Y-Axis is the leading Englewood Farm and Magness herd sire and son of TC Aberdeen from a daughter of MAGS Manuela 662M
- Her dam is a daughter of the once national top selling sire MAGS Scotland
- This 50% Lim-Flex heifer scanned a 13.20 for ribeye and 4.45 for marbling



Morris

Lot 39

OKSU The Profit, serice sire of Lot 39.



39 PBRS Avant 3173A

LIM-FLEX (46)
COW
DOUBLE PLD
DOUBLE BLK
09.10.13
PBRS 3173A
LFF 2048718

MAGS Y-AXIS

EXLR REBECA 1023S

TC ABERDEEN 759

MAGS UAHUKA

BR MIDLAND

LVLS REBECA

C R A BEXTOR 872 5205 608

TC BLACKBIRD 4034

DHVO DEUCE 132R

CARROUSELS PINA COLADA

TWIN VALLEY PRECISIONE161

BR ROYAL LASS 7036-19

POLLED PACK LEADER 1182U

WZRK MISS VICTOR 707T

| | CED | BW | WW | YW | MA | CEM | SC | ST | DOC | CW | REA | YG | MARB | SMTI | UFAT | UREA | UIMF |
|-------|-----|-----|----|-----|----|-----|-----|----|-----|----|------|-------|------|-------|------|-------|------|
| EPD | 11 | 0.4 | 67 | 109 | 21 | 8 | 1.1 | - | 14 | 35 | 0.46 | -0.11 | 0.23 | 59.72 | 0.3 | 14.53 | 5.1 |
| %Rank | 15 | 35 | 30 | 15 | 65 | 15 | 5 | - | 75 | 20 | 30 | 50 | 25 | 25 | | | |

- A.I. 12.03.14 to OKSU The Profit; P.E. 12.29.14 to 2.10.15 to PBRS Anchor 390A
- Double polled and double black
- This 46% Lim-Flex heifer is really, really good and we are certain you will agree once you see her in person
- This daughter of MAGS Y-Axis is from a daughter of BR Midland from the famed LVLS Rebeca donor
- She ranks in the top 15% of yearling weight, CEM and top 5% for scrotal circumference



Morris

Lot 40

40 P BAR S 310

PB ANGUS
COW
HOMO PLD
HOMO BLK
09.25.13
310
AAA 17794596

P BAR S BISMARCK 0146X

S A V BISMARCK 5682
OAK HILL MISS WIX 72S

P BAR S ESTHER 1006

LIMESTONETHRILL T291
BUFORD ESTHER 9084

G A R GRID MAKER
S A V ABIGALE 0451
S A V 8180 TRAVELER 004
OAK HILL MISS WIX 9402
O C C LEGEND 616L
AKERS LUCY 5239
BOHI PREDESTINED 6100
J BAR 7 ESTHER 5449

- A.I. 12.15.14 to JCL Lodestar 27L; P.E. 12.29.14 to 2.10.15 to PBRS Anchor 390A
- This is one terrific purebred Angus female straight from the heart of the P Bar S Ranch program
- She is a daughter of P Bar S Bismarck 0146X, a son of SAV Bismarck 5682 from the prominent Angus P Bar S Ranch donor Oak Hill Miss Wix 72S
- Her dam goes back to OCC Legend 616L back to a granddaughter of GAR Predestined
- We admire the profile, the balance and the fleshing ability found within this female and we are certain she is going to make an impact in any program she might end up

| | CED | BW | WW | YW | MA | CEM | SC | ST | DOC | CW | REA | YG | MARB | SMTI | UFAT | UREA | UIMF |
|-------|-----|-----|----|----|----|-----|----|----|-----|----|------|------|------|------|------|------|------|
| EPD | 6 | 1.2 | 48 | 86 | 22 | 9 | - | - | - | 24 | 0.36 | 0.04 | 0.60 | - | - | - | - |
| %Rank | 5 | 5 | 5 | 5 | 5 | 5 | - | - | - | 5 | 5 | 5 | 5 | - | - | - | - |



Morris

Lot 41

PBRS 024X, sire of Lot 41.



Morris

41 PBRS Aspen Air 3140A

LIM-FLEX (46)
COW
DOUBLE PLD
HOMO BLK
09.01.13
PBRS 3140A
LFF 2048731

PBRS024X

BOHI SEDELIA 6221S

DHVO DEUCE 132R
OAK HILL MISS WIX 72S
G A R INTEGRITY
ANLC0745K

GPFF BLAQUE RULON
AMY JO DHAN 20L
S A V 8180 TRAVELER 004
OAK HILL MISS WIX 9402
BON VIEW NEW DESIGN 1407
G A R PRECISION 1019
COLE FIRST DOWN 46D
LAURA'S OPIUM

| | CED | BW | WW | YW | MA | CEM | SC | ST | DOC | CW | REA | YG | MARB | SMTI | UFAT | UREA | UIMF |
|-------|-----|-----|----|----|----|-----|----|----|-----|----|------|------|------|-------|------|------|------|
| EPD | 10 | 0.6 | 53 | 83 | 21 | 5 | - | - | - | 21 | 0.23 | 0.01 | 0.15 | 54.45 | 0.32 | 10.8 | 38.7 |
| %Rank | 25 | 40 | 90 | 75 | 65 | 60 | - | - | - | 70 | 80 | 85 | 35 | 45 | | | |

- A.I. 12.16.14 to OKSU The Profit; P.E. 12.29.14 to 2.10.15 to PBRS Anchor 390A
- Double polled and homozygous black
- This 50% Lim-Flex first calf heifer is one of the finest of the entire sale
- Her sire PBRS 024X, is a proven son of the once national champion sire DHVO Deuce 132R from the PBRS Angus donor Oak Hill Miss Wix 72S
- Her dam is a daughter of GAR Integrity from the Edwards Land & Cattle Co., donor ANLC 0745K
- She scanned a 10.80 for REA and 3.87 for IMF
- We appreciate the massive rib shape, depth of body and overall capacity. She has the look of promise and we are certain a future that looks bright

42 PBRS Alex 3143A

LIM-FLEX (50)
COW
HOMO PLD
DOUBLE BLK
09.02.13
PBRS 3143A
LFF 2048732

PBRS024X

WLR WHISPER TO ME 576

DHVO DEUCE 132R
OAK HILL MISS WIX 72S
G A R PREDESTINED
JCL HEIDI 2S

GPFF BLAQUE RULON
AMY JO DHAN 20L
S A V 8180 TRAVELER 004
OAK HILL MISS WIX 9402
B/R NEW DESIGN 036
G A R EXT 4206
EF MAIN STAY 541M
DVFC HEIDI 302K

| | CE | BW | WW | YW | MA | CEM | SC | ST | DOC | CW | REA | YG | MARB | SMTI | UFAT | UREA | UIMF |
|-------|----|------|----|-----|----|-----|----|----|-----|----|------|------|------|-------|------|-------|------|
| EPD | 9 | -0.7 | 64 | 100 | 22 | 60 | - | - | - | 28 | 0.22 | 0.06 | 0.41 | 63.89 | 0.36 | 12.62 | 4.64 |
| %Rank | 30 | 15 | 45 | 35 | 60 | 45 | - | - | - | 45 | 80 | 95 | 10 | 15 | | | |

- A.I. 12.15.14 to OKSU The Profit; P.E. 12.29.14 to 2.10.15 to PBRS Anchor 390A
- Homozygous Polled and Double Black
- Dam of this excellent female is none other than the our JCL Heidi daughter and past Wies Limousin sale headliner, WLR Whisper to Me.
- We love the performance profile that Ale brings to the table, she exceeds the breed average for CED, BW, WW, YW and is in the top 10% for MB epd and top %15 for \$MTI.
- Sired by the uniquely pedigreed PBRS 024X, our past herd sire by past national champion DHVO Deuce and out of our famous Miss Wix Angus donor.



Lot 44

43 PBRS Alabama 3167A

LIM-FLEX (50)
COW
HOMO PLD
HOMO BLK
09.08.13
PBRS 3167A
LFF 2048717

PBRS024X

LEWIS SELENA 216S

DHVO DEUCE 132R
OAK HILL MISS WIX 72S
JCL LODESTAR 27L
AMEN WENDYS LASS 380

GPFF BLAQUE RULON
AMY JO DHAN 20L
S A V 8180 TRAVELER 004
OAK HILL MISS WIX 9402
HUNTS HI-LITER 245G
LOGAN'S CHEERLEADER 280G
S A F FOCUS OF E R
AMEN WENDYS LASS 246

| | CE | BW | WW | YW | MA | CEM | SC | ST | DOC | CW | REA | YG | MARB | SMTI | UFAT | UREA | UIMF |
|-------|----|-----|----|----|----|-----|----|----|-----|----|------|------|------|-------|------|-------|------|
| EPD | 11 | 0.2 | 30 | 20 | 60 | 7 | - | - | - | 34 | 0.14 | 0.09 | 0.27 | 59.77 | 0.37 | 12.57 | 3.79 |
| %Rank | 15 | 30 | 30 | 20 | 60 | 25 | - | - | - | 25 | 90 | >95 | 20 | 20 | | | |

- A.I. 12.9.14 to MAGS Eagle; P.E. 12.29.14 to 2.10.15 to PBRS Anchor 3390A
- Homozygous polled and homozygous black
- Lewis Selena 216S has produced some of the finest cattle in our ET program and Alabama is no exception. Her dam was a contending top-seller in a past Hayhook sale, commanding \$8250 as a bred cow. Alabama is a natural calf of this exclusive donor.
- 3167A ranks in the top 15% for CED and top 20% for MB and \$MTI.
- In regards to ultrasound data, she scanned a 12.57 REA and ratioed a 103.5 in her respective contemporary group.

44 PBRS Apple Red 3192A

LIM-FLEX (37)
COW
HOMO PLD
HOMO BLK
09.22.13
PBRS 3192A
LFF 2048733

PBRS024X

RVDR ULTIMATE DIXIE 1802U

DHVO DEUCE 132R
OAK HILL MISS WIX 72S
G A R PREDESTINED
SSTO STARLA 6803S

GPFF BLAQUE RULON
AMY JO DHAN 20L
S A V 8180 TRAVELER 004
OAK HILL MISS WIX 9402
B/R NEW DESIGN 036
G A R EXT 4206
JCL LODESTAR 27L
C R C DIXIE ERICA 2621M

| | CE | BW | WW | YW | MA | CEM | SC | ST | DOC | CW | REA | YG | MARB | SMTI | UFAT | UREA | UIMF |
|-------|----|------|----|-----|----|-----|----|----|-----|----|------|------|------|-------|------|------|------|
| EPD | 9 | -0.1 | 66 | 106 | 24 | 6 | - | - | - | 33 | 0.27 | 0.09 | 0.48 | 66.94 | 0.27 | 9.86 | 4.84 |
| %Rank | 30 | 25 | 35 | 20 | 40 | 45 | - | - | - | 25 | 70 | >95 | 10 | 10 | | | |

- A.I. 12.14.14 to LH Uhaul; P.E. 12.29.14 to 2.10.15 to PBRS Anchor 390A
- Homozygous polled and homozygous black
- This group of fall bred heifers represent the very finest cow families that we have here at P Bar S, we are very fortunate to be able to offer this exceptional set for sale.
- She is a natural daughter of the data driven donor, RVDR Ultimate Dixie, who is a trait leader for both MB and \$MTI on top of a absolutely flawless set of numbers across the board.
- PBRS Apple Red scanned an IMF score of 4.84 and ranks in the top 10% for MB and \$MTI.
- You have to admire the center depth of this female, you also will appreciate her for how flat and smooth shouldered she is. Truly looks like a maternal machine.



Lot 45

45 PBRS Answered 3194A

LIM-FLEX (37)
COW
DOUBLE PLD
DOUBLE BLK
09.27.13
PBRS 3194A
LFF 2048734

MAGS WAZOWSKI

BUF LADY BEHAVE 8150

DHVO DEUCE 132R
BOHI RED ROBIN 282R
SAV EMULOUS 8145
J BAR 7 LADY BEHAVE 6306

GPFF BLAQUE RULON
AMY JO DHAN 20L
CONNELLY LEAD ON
MAGS MANUELA
SITZ TRAVELER 8180
SAV EMULOUS 8145
SAF 598 BANDO 5175
CABIN CREEK BEHAVE 368

| | CE | BW | WW | YW | MA | CEM | SC | ST | DOC | CW | REA | YG | MARB | SMTI | UFAT | UREA | UIMF |
|-------|----|-----|----|-----|----|-----|------|----|-----|----|-----|------|------|------|------|-------|------|
| EPD | 10 | 1.2 | 85 | 130 | 22 | 6 | 1.35 | - | 15 | 49 | 0.5 | 0.09 | 0.6 | 76.7 | 0.41 | 12.91 | 3.98 |
| %Rank | 25 | 50 | 1 | 1 | 60 | 45 | 2 | - | 70 | 2 | 25 | >95 | 3 | 1 | | | |

- A.I. 12.21.14 to OKSU The Profit; P.E. 1.3.15 to 2.10.15 to PBRS Anchor 390A
- Wow! It isn't very often that cattle's pictures are as equally impressive as their data profiles, however that is not the case with PBRS Answered 3194A.
- This 37% Lim-Flex daughter of MAGS Wazowski is off the charts statistically speaking. She is a trait leader for WW, YW and \$MTI. Also, she ranks in the top 2 % for SC and CW, top 3% for MB and still manages to be in the double digits for CED. Simply incredible.
- Her dam, BUF Lady Behave 8150 posts an impressive 77.50 \$MTI epd which puts her atop the trait leaders list.
- Please examine this phenomenally constructed female, tons of volume and muscle tied to together in an attractive package.

46 PBRS Addy 3187A

LIM-FLEX (75)
COW
DOUBLE PLD
HOMO BLK
09.22.13
PBRS 3187A
LFF 2048736

MAGS XYLOID

PBRS MISS 0102X

DHVO DEUCE 132R
BOHI RHONDA 314R
WULFS TITUS 2149T
MAGS REVA

GPFF BLAUQUE RULON
AMY JO DHAN 20L
EXLR NEW GENERATION 071M
DAVIS ROSETTA 9514
WULFS REALTOR 1503R
WULFS MEADOW GRASS 2149M
EF MAIN STAY 541M
TWIN EAGLESBEMINDMAID638K

| | CED | BW | WW | YW | MA | CEM | SC | ST | DOC | CW | REA | YG | MARB | SMTI | UFAT | UREA | UIMF |
|-------|-----|-----|----|----|----|-----|------|----|-----|----|------|-------|------|-------|------|-------|------|
| EPD | 9 | 0.3 | 55 | 88 | 17 | 15 | 0.45 | 10 | 23 | 23 | 0.19 | -0.02 | 0.08 | 49.79 | 0.21 | 12.89 | 3.59 |
| %Rank | 30 | 35 | 85 | 65 | 95 | 15 | 75 | 95 | 35 | 65 | 85 | 80 | 40 | 55 | | | |

- A.I. 12.22.15 to OKSU The Profit; P.E. 12.29.15 to 2.10.15 to PBRS Anchor 390A
- Double polled and homozygous black
- With multiple Limousin national champions and several of the Angus breeds top maternal powers represented in this pedigree, we feel her best days are yet to come. This granddaughter of our famous donor MAGS Reva is absolutely exceptional.
- Her scan data is quite interesting to us, she ratioed 108 for REA and an impressive 74 and 69 for fat thickness and rump fat. She certainly could offer significant change in your cowherd.

48 PBRS Abby 3162A

LIM-FLEX (50)
COW
HOMO PLD
DOUBLE BLK
09.05.13
PBRS 3162A
LFF 2048726

MAGS THE GENERAL

JLM ANITA W038

AUTO DOLLAR GENERAL 122R
EXLR LUVLY 821M
S A V NET WORTH 4200
SWEETWATER ANITA P52

LVLS SECRET WEAPON 4408K
AUTO KYRIA 232K
AUTO BLACK DAKOTA 129J
EXLR LUVLY 084F
S A V 8180 TRAVELER 004
S A V MAY 2410
LEACHMAN RIGHT TIME
E H F ANITA C126

| | CED | BW | WW | YW | MA | CEM | SC | ST | DOC | CW | REA | YG | MARB | SMTI | UFAT | UREA | UIMF |
|-------|-----|-----|----|-----|----|-----|------|----|-----|----|------|-------|------|-------|------|-------|------|
| EPD | 7 | 0.7 | 68 | 108 | 32 | 10 | 0.44 | - | 17 | 35 | 0.34 | -0.03 | 0.39 | 64.96 | 0.41 | 13.72 | 4.39 |
| %Rank | 50 | 40 | 30 | 20 | 3 | 2 | 75 | - | 65 | 20 | 55 | 75 | 15 | 15 | | | |

- A.I. 12.15.15 to OKSU The Profit; P.E. 12.29.15 to 2.10.15 to PBRS Anchor 390A
- Homozygous polled and double black
- Got Milk? PBRS Abby 3162A certainly will, we are confident in her stellar maternal epds. She ranks in the top 3% for MK and top 4% for TM, posting a respectable 32 and 66 epd for such traits.
- We love the predictability in Abby's pedigree. Being a MAGS The General daughter out of a SAV Net Worth Cow. Clearly two of the favorite bulls of the Limousin and Angus breeds.

50 PBRS Amount Due 3204A

LIM-FLEX (43)
COW
DOUBLE PLD
DOUBLE BLK
10.31.13
PBRS 3204A
LFF 2048755

LVLS 3202U

NHCA YESTERDAY 312Y

BON VIEW NEW DESIGN 1407
LVLS 9202S
S A V BISMARCK 5682
LVLS9794N

B/R NEW DESIGN 036
BON VIEW PRIDE 664
LVLS FARMER JOHN 7428P
LVLS9202N
G A R GRID MAKER
S A V ABIGALE 0451
LVLS SECRET WEAPON 4408K
LVLS 794B

| | CED | BW | WW | YW | MA | CEM | SC | ST | DOC | CW | REA | YG | MARB | SMTI | UFAT | UREA | UIMF |
|-------|-----|------|----|----|----|-----|------|----|-----|----|------|-------|------|-------|------|------|------|
| EPD | 12 | -0.5 | 61 | 94 | 29 | 10 | 0.96 | 12 | - | 25 | 0.37 | -0.11 | 0.48 | 66.84 | 0.16 | 7.9 | 3.9 |
| %Rank | 10 | 20 | 60 | 50 | 10 | 2 | 20 | 85 | - | 55 | 50 | 50 | 10 | 10 | | | |

- A.I. 12.19.15 to RLBH Air Force One; P.E. 12.29.15 to 2.10.15 to PBRS Anchor 390A
- Double polled and double black
- This 43% female is a dynamic breeding piece that ranks impressively in the top 10% of the breed for CED, MK, MB and SMTI all the while being in the top 2% for CEM.
- PBRS Amount Due 3204 is out of an exceptional daughter of SAV Bismarck 5682.

47 PBRS All In 3199A

LIM-FLEX (75)
COW
HOMO PLD
HOMO BLK
10.10.13
PBRS 3199A
LFF 2048741

MAGS XYLOID

LH XBOX 506X

DHVO DEUCE 132R
BOHI RHONDA 314R
KRVN TAHOE 018T
SHAMROCKS BLACKBIRD 714 E BR MIDLAND

GPFF BLAUQUE RULON
AMY JO DHAN 20L
EXLR NEW GENERATION 071M
DAVIS ROSETTA 9514
JCL LODESTAR 27L
WULFS GERALDINE 7057G
SHAMROCKS BLACKBIRD 1937

| | CED | BW | WW | YW | MA | CEM | SC | ST | DOC | CW | REA | YG | MARB | SMTI | UFAT | UREA | UIMF |
|-------|-----|-----|----|----|----|-----|-----|----|-----|----|------|------|------|-------|------|-------|------|
| EPD | 9 | 1.1 | 60 | 94 | 17 | 8 | 0.4 | 11 | 16 | 27 | 0.07 | 0.04 | 0.37 | 61.22 | 0.27 | 11.98 | 3.61 |
| %Rank | 30 | 50 | 65 | 50 | 95 | 15 | 75 | 90 | 65 | 50 | 95 | 95 | 15 | 20 | | | |

- A.I. 12.21.15 to MAGS Eagle; P.E. 12.29.15 to 2.10.15 to PBRS Anchor 390A
- Homozygous polled and homozygous black.
- We absolutely love it when we can offer homo/homo MAGS Xyloid daughters for sale to the public.
- Being a MAGS Xyloid, we have a ton of excitement for her future. Like the remainder of her sire group, these young ladies are constantly changing and getting better as time goes on.

49 PBRS All Night Long 3172A

LIM-FLEX (50)
COW
DOUBLE PLD
HOMO BLK
09.09.13
PBRS 3172A
LFF 2047312

CALO BRICKYARD 902W

BOHI SUNDANCE 6217S

SCHILLING'S TALLADEGA
EXG E839 1407 M175 LS
G A R INTEGRITY
ANLC 0745K

KRVN NASKAR 013N
RCSX RAINY DAY 80R
BON VIEW NEW DESIGN 1407
PAF 4019 6807 E839
BON VIEW NEW DESIGN 1407
G A R PRECISION 1019
COLE FIRST DOWN 46D
LAURA'S OPIUM

| | CED | BW | WW | YW | MA | CEM | SC | ST | DOC | CW | REA | YG | MARB | SMTI | UFAT | UREA | UIMF |
|-------|-----|-----|-----|----|----|-----|----|------|-----|----|------|-------|------|-------|------|------|------|
| EPD | 10 | 0.7 | 47 | 71 | 20 | 44 | 3 | 0.68 | 15 | 12 | 0.24 | -0.09 | 0.31 | 56.19 | - | - | - |
| %Rank | 25 | 40 | >95 | 95 | 75 | 95 | 85 | 50 | 55 | 80 | 75 | 60 | 20 | 30 | | | |

- A.I. 12.15.15 to OKSU The Profit; P.E. 12.29.15 to 2.10.15 to PBRS Anchor 390A
- Heterozygous Polled and homozygous black
- PBRS All Night Long 3172A is the daughter of past National Champion and crowd favorite, CALO Brickyard.
- She records an ideal birthweight of 71lbs and an impressive weaning weight of 702lbs.
- Out of a high marbling daughter of the Angus icon GAR Integrity.

51 PBRS Alaskan Wild 3205A

LIM-FLEX (56)
COW
HOMO PLD
DOUBLE BLK
10.31.13
PBRS 3205A
LFF 2048754

SCHILLING'S WHIPLASH

TMCK LA VEDA 96W

DCC NEW LOOK 101
CDSX MARILYN
EXLR SATURN 040S
EXLR LA VEDA 212T

O C C GENESIS 872G
O C C DIXIE ERICA 814G
EXLR DAKOTA 353G
MISS RDSX JEWEL
CARROUSELS PURE POWER
EXLR BAMBI 787M
EXLR PROMINENT 1023P
EXLR LA VEDA 1002P

| | CED | BW | WW | YW | MA | CEM | SC | ST | DOC | CW | REA | YG | MARB | SMTI | UFAT | UREA | UIMF |
|-------|-----|----|----|----|----|-----|------|----|-----|----|------|-------|------|-------|------|-------|------|
| EPD | 8 | 1 | 50 | 72 | 25 | 4 | 0.53 | - | - | 14 | 0.36 | -0.12 | 0.18 | 52.53 | 0.32 | 11.91 | 4.15 |
| %Rank | 40 | 50 | 95 | 90 | 30 | 75 | 65 | - | - | 90 | 50 | 45 | 30 | 45 | | | |

- A.I. 12.14.15 to PBRS Milestone; P.E. 12.29.15 to 2.10.15 to PBRS Anchor 390A
- Homozygous polled and double black
- PBRS Alaskan Wild 3205A comes from the great EXLR LaVeda 1002P cow family. 1002P is one of the very finest Lim-Flex females ever created, she sold through the 2010 Tubmill Creek Sale for \$30,000 to Circle L and Magness Land and Cattle. Recently this cow family produced the many time banner winners TMCK Architect and TMCK LaVeda 006A.
- The future of this intriguing young female is very exciting and we look forward to the greatness that she will produce.

FEATURED P BAR S RANCH HERD SIRES



OKSU The Profit 3401



AALF Grand Champion Bull

AUTO Lucky Strike 118B

A OKSU The Profit 3401

LIM-FLEX (50)
BULL
DOUBLE PLD
HOMO BLK
01.18.13
OKSU 3401A
LFM 2035366

LH RODEMASTER 338R

OKSU EXCITEMENT 046

JCL LODESTAR 27L

VERMILION E BLACKBIRD 9546

LKCC EXPRESSWAY 193C

OKSU MS PUNCH 902X

HUNTS HI-LITER 245G

LOGAN'S CHEERLEADER 280G

VERMILION 31 STACLER 3491

CH ENV BLACKBIRD C5941

LKCC LBACK LOTO 1079W

LKCC SMITH CATTLE 532P

PUNCH

CVR KERRIGAN'S LADD 518N

| | CED | BW | WW | YW | MA | CEM | SC | ST | DOC | CW | REA | YG | MARB | SMTI | UFAT | UREA | UIMF |
|-------|-----|-----|----|-----|----|-----|------|----|-----|----|------|------|------|-------|------|-------|------|
| EPD | 5 | 1.8 | 67 | 101 | 19 | 5 | 0.35 | 16 | 5 | 33 | 0.21 | 0.03 | 0.25 | 59.16 | 0.41 | 16.69 | 6.3 |
| %Rank | 75 | 65 | 30 | 35 | 85 | 60 | 85 | 40 | 95 | 25 | 80 | 90 | 25 | 25 | | | |

B AUTO Lucky Strike 118B

LIM-FLEX (71)
BULL
DOUBLE PLD
DOUBKE BLK
03.14.14
AUTO 118B
LFM 2058750

LH U HAUL 135U

AUTO LUCKIE 246W

BASIN FRANCHISE P142

EXLR DUCHESS 7129R

WLR DIRECT HIT

TYEJ DB SERENITY

C A FUTURE DIRECTION 5321

BASIN CHLOE 812L

EXLR NEW GENERATION 071M

EXLR 199H

KRVN NASKAR 013N

MAGS NIGHT AMBUSH

LESF ASPHALT 9N

TYEJ DB SIZZLE

| | CED | BW | WW | YW | MA | CEM | SC | ST | DOC | CW | REA | YG | MARB | SMTI | UFAT | UREA | UIMF |
|-------|-----|-----|----|----|----|-----|------|----|-----|----|------|-------|------|-------|------|------|------|
| EPD | 10 | 1.2 | 64 | 99 | 28 | 4 | 0.70 | 10 | 15 | 30 | 0.43 | -0.06 | 0.28 | 60.06 | 0.33 | 14.3 | 3.9 |
| %Rank | 25 | 50 | 45 | 35 | 15 | 75 | 40 | 95 | 70 | 35 | 35 | 70 | 20 | 20 | | | |



PBRS Milestone 137Y



PBRS Anchor 390A



PBRS Brewed Cold

C PBRS Milestone 137Y

LIM-FLEX (46)
BULL
HOMO PLD
HOMO BLK
03.15.11
PBRS 137Y
LFF 1993886

LH U HAUL 135U

MAGS UNIVERSAL TIME

BASIN FRANCHISE P142

EXLR DUCHESS 7129R

G A R PREDESTINED

MAGS RIO RITA

C A FUTURE DIRECTION 5321
BASIN CHLOE 812L
EXLR NEW GENERATION 071M
EXLR 199H
B/R NEW DESIGN 036
G A R EXT 4206
JCL LODESTAR 27L
MAGS JODI

| | CEP | BW | WW | YW | MA | CEM | SC | ST | DOC | CW | REA | YG | MARB | SMTI | UFAT | UREA | UIME |
|-------|-----|-----|----|-----|----|-----|------|----|-----|----|------|------|------|-------|------|-------|------|
| EPD | 10 | 1.1 | 70 | 114 | 28 | 8 | 0.70 | 12 | 15 | 39 | 0.43 | 0.06 | 0.85 | 81.72 | 0.33 | 13.15 | 4.05 |
| %Rank | 25 | 50 | 25 | 15 | 20 | 20 | 35 | 70 | 55 | 15 | 40 | 95 | 4 | 4 | | | |

D PBRS Anchor 390A

LIM-FLEX (75)
BULL
HOMO PLD
HOMO BLK
03.26.13
PBRS 390A
LFF 2040458

MAGS Y-AXIS

FLLR TIGER LILY

TC ABERDEEN 759

MAGS UAHUKA

MYTTY IN FOCUS

DIAMOND ROSE R051

C R A BEXTOR 872 5205 608
TC BLACKBIRD 4034
DHVO DEUCE 132R
CARROUSELS PINA COLADA
S A F FOCUS OF E R
MYTTY CONUNTESS 906
TNUH BLUE PRINT 245H

| | CEP | BW | WW | YW | MA | CEM | SC | ST | DOC | CW | REA | YG | MARB | SMTI | UFAT | UREA | UIME |
|-------|-----|------|----|-----|----|-----|------|----|-----|----|------|-------|------|-------|------|-------|------|
| EPD | 15 | -1.0 | 70 | 103 | 25 | 9 | 1.23 | - | 29 | 29 | 0.55 | -0.12 | 0.27 | 60.59 | 0.36 | 14.80 | 2.7 |
| %Rank | 2 | 15 | 20 | 30 | 30 | 10 | 3 | - | 15 | 40 | 20 | 45 | 20 | 20 | | | |

E PBRS BREWED COLD 441B

LIM-FLEX (50)
BULL
HOMO PLD
HOMO BLK
02.27.14
PBRS 441B
LFF 2064121

MAGS THE GENERAL

JLM ANITA W038

AUTO DOLLAR GENERAL 122R

EXLR LUVLY 821M

S A V NET WORTH 4200

SWEETWATER ANITA P52

LVLS SECRET WEAPON 4408K
AUTO KYRIA 232K
AUTO BLACK DAKOTA 129J
EXLR LUVLY 084F
S A V 8180 TRAVELER 004
S A V MAY 2410
LEACHMAN RIGHT TIME
E H F ANITA C126

| | CEP | BW | WW | YW | MA | CEM | SC | ST | DOC | CW | REA | YG | MARB | SMTI | UFAT | UREA | UIME |
|-------|-----|-----|----|-----|----|-----|------|----|-----|----|------|------|------|-------|------|-------|------|
| EPD | 8 | 1.4 | 59 | 107 | 27 | 8 | 0.50 | 11 | 2 | 36 | 0.15 | 0.06 | 0.53 | 67.86 | 0.27 | 15.39 | 4.2 |
| %Rank | 40 | 55 | 65 | 20 | 20 | 15 | 65 | 90 | >95 | 20 | 90 | 95 | 5 | 10 | | | |



MAGS Aviator, sire of Lot 52 embryos.



AUTO Ajay 206A, dam of Lot 52 embryos.

52 Sexed Heifer Pregnancy

DUE 03.07.16
54.5% LIM-FLEX
DOUBLE POLLED
HOMO BLACK

MAGS AVIATOR

AUTO AJAY 206A

MAGS WINSTON
MAGS XTRA REST
S A V BRAVE 8320
MAGS MANUELA

BT CROSSOVER 758N
MAGS STRAWBERRY
DHVO DEUCE 132R
MAGS UNREST
S A V MANDAN 5664
S A V MAY 2397
WULFS GLENDA 7021G
AUTO CITY NIGHTS 214H

| | CED | BW | WW | YW | MA | CEM | SC | ST | DOC | CW | REA | YG | MARB | SMTI | UFAT | UREA | UIMF |
|-----|-----|-----|----|-----|----|-----|------|----|-----|----|------|------|------|-------|------|------|------|
| EPD | 10 | 2.0 | 67 | 108 | 25 | 7 | 0.91 | 13 | 20 | 37 | 0.37 | 0.15 | 0.36 | 69.37 | - | - | - |

- Double polled and homozygous black
- Sired by MAGS Aviator, the highly syndicated Lim-Flex son of MAGS Winston from a proven daughter of the once national champion DHVO Deuce
- She is from one of the leading P Bar S Ranch donors AUTO Ajay 206A, a young daughter of SAV Brand Name from the breed's top money earner MAGS Manuela 662M
- This guaranteed heifer calf is really going to be something special. The blending of so many great lines of cattle all wrapped up into one package we feel will result into a pretty cool calf
- Buy with confidence in this mating as we are certain you will like what you see come next March



MAGS Anchor 407A, sire of Lot 53 embryos.



BUEF Eppionia 7307, dam of Lot 53 embryos.

53 8 EMBRYOS

HOMO BLACK
HOMO POLLED
37.5% LIM-FLEX

MAGS ANCHOR

BUEF EPPIONIA 7307

LH WAR HERO 195W
MGS XIPHOPAGOUS
S A V 8180 TRAVELER 004
SITZ EPPIONIA 534

JCL LODESTAR 27L
VERMILION ERICA LADY 1229
AMY JO DHAN 20L
MAGS SALINA
SITZ TRAVELER 8180
BOYD FOREVER LADY 8003
O C C GREAT PLAINS 943G
SITZ EPPIONIA 1632

| | CED | BW | WW | YW | MA | CEM | SC | ST | DOC | CW | REA | YG | MARB | SMTI | UFAT | UREA | UIMF |
|-----|-----|-----|----|-----|----|-----|------|----|-----|----|------|------|------|-------|------|------|------|
| EPD | 8 | 1.1 | 60 | 100 | 21 | 8 | 0.30 | - | 7 | 33 | 0.43 | 0.02 | 0.34 | 30.18 | - | - | - |

- Combining the very best of our Lim-Flex bull battery and the top of our Angus donor females in this particular flush.
- We can't think of a better mating for BUF Eppionia 7307 than the massive, yet striking MAGS Anchor.
- BUF Eppionia 7307 has three exceptional females in this very offering that we are very proud to offer. Like mentioned before, the Eppionia cow family has made a stunning impact on both the Angus and Lim-Flex breed across the country.
- Resulting progeny will be homozygous black and homozygous polled.

54 5 EMBRYOS

HOMO BLACK
HOMO POLLED
62.5% LIM-FLEX

MAGS ANCHOR

LH WAR HERO 195W
MGS XIPHOPAGOUS
AUTO DOLLAR GENERAL 122R
CABIN CREEK BEHAVE 6040

JCL LODESTAR 27L
VERMILION ERICA LADY 1229
AMY JO DHAN 20L
MAGS SALINA
LVLS SECRET WEAPON 4408K
AUTO KYRIA 232K
SAF 598 BANDO 5175
CABIN CREEK BEHAVE 368

MAGS WEB OF DECEIT

| EPD | CED | BW | WW | YW | MA | CEM | SC | ST | DOC | CW | REA | YG | MARB | SMTI | UFAT | UREA | UIMF |
|-----|-----|----|-----|----|----|------|----|----|-----|------|------|------|-------|------|------|------|------|
| 8 | 1.0 | 79 | 119 | 30 | 7 | 0.70 | 5 | 15 | 42 | 0.57 | 0.02 | 0.19 | 60.17 | - | - | - | |

- MAGS Web of Deceit is a very special part of our donor line-up who's embryo progeny will soon be making an impact in our program. She impressively raised MAGS Eagle as a two year old and weaned him at impressive 942lbs. MAGS Eagle is now one of the most popular A.I. sires on the market for Hall Cattle Co. and Magness.
- Sired by the syndicated MAGS Anchor bull who was a lead off in the 2014 Magness Bull Sale.
- Resulting progeny will have tremendous growth numbers and will be homozygous polled and homozygous black.



MAGS Anchor 407A, sire of Lot 54 embryos.

55 6 EMBRYOS

HOMO BLACK
HOMO POLLED
65% LIM-FLEX

MAGS Y SO TANGLED

MAGS WINSTON
MAGS STRAWBERRY
DHVO DEUCE 132R
MAGS UPPER HAND

BT CROSSOVER 758N
BT ROYAL PRIDE 237G
EXLR NEW GENERATION 071M
MAGS FRUITFUL 487M
GPF BLAQUE RULON
AMY JO DHAN 20L
MAGS REMOTE
HA LADY 1091

MAGS YOUNG HAND

| EPD | CED | BW | WW | YW | MA | CEM | SC | ST | DOC | CW | REA | YG | MARB | SMTI | UFAT | UREA | UIMF |
|-----|-----|----|-----|----|----|------|----|----|-----|------|------|------|-------|------|------|------|------|
| 10 | 0.6 | 68 | 106 | 19 | 7 | 0.68 | 11 | 22 | 34 | 0.24 | 0.08 | 0.27 | 61.29 | - | - | - | |

- MAGS Young Hand is a coveted past member of the 2011-2012 Magness showstring that achieved so many wonderful accolades at all of the major shows. MAGS Young Hand is one of the most structurally true and functional females that we have the honor of having in our donor pen. Her mass, style and soundness are impressive.
- Mated with MAGS Y So Tangled who was the 2013 National Western Champion with a neatly balanced set of EPD across the board. His strongest attributes however are his softness of structure and his depth of body.
- This exciting cross will produce cattle that will stand out in the showring and in the pasture.



MAGS Y So Tangled, sire of Lot 55 embryos.



MAGS Young Hand, dam of Lot 55 embryos.



Lot 56



Lot 56A



Lot 57A



ELCX Turning Point 641Z, service sire to Lot 57.

56 P Bar S Erica 307

PB ANGUS
COW
HOMO PLD
DOUBLE BLK
03.21.13
307
AAA 17638204

P BAR S BISMARK 0146X
S A V BISMARK 5682
OAK HILL MISS WIX 725
P BAR S ERICA 1003
LIMESTONE THRILL T291
BUFORD ERICA 9312

G A R MAKER
S A V ABIGALE 0451
S A V 8180 TRAVELER 004
OAK HILL MISS WIX 9402
O C C LEGEND 616L
AKERS LUCY 5239
J BAR 7 ALLIANCE 6869
LCC ERICA LG008

| | CED | BW | WW | YW | MA | CEM | SC | ST | DOC | CW | REA | YG | MARB | SMTI | UFAT | UREA | UIMF |
|-------|-----|-----|----|----|----|-----|----|----|-----|----|------|------|------|------|------|------|------|
| EPD | 7 | 0.9 | 37 | 76 | 20 | 10 | - | - | - | 20 | 0.14 | 0.02 | 0.52 | - | - | - | - |
| %Rank | 22 | 24 | 16 | 10 | 9 | 7 | - | - | - | 8 | 14 | 11 | 12 | - | - | - | - |

- AI'd 05.21.15 to Border Agent; P.E. 05.26.15 - 07.16.15 to Turning Point.
- We had great expectations for P Bar S Bismarck 0146X when he hit the ground. Being an SAV Bismarck out of our favorite Oak Hill Miss Wix 725, we only hope that he would breed as true as his pedigree indicated that he would. He has certainly outdone himself with this set of two year olds that we have in production now.
- PBRS Covergirl 524C is a promising young female with a ton of style and certainly is going to carry forward her sire's reputation for show stopping eye appeal.

56A Covergirl

LIM-FLEX (43)
COW
DOUBLE PLD
DOUBLE BLK
02.06.15
PBRS 524C
LFF 2077420

ELCX TURNING POINT 641Z
MAGS XYLOID
GPFX 6415
P BAR S ERICA 307
P BAR S BISMARK 0146X
P BAR S ERICA 1003

DHVO DEUCE 132R
BOHI RHONDA 314F
GPFX MS BLUEPRINT
MAGS PALOOKA
S A V BISMARK 5682
OAK HILL MISS WIX 725
LIMESTONE THRILL T291
BUFORD ERICA 9312

| | CED | BW | WW | YW | MA | CEM | SC | ST | DOC | CW | REA | YG | MARB | SMTI | UFAT | UREA | UIMF |
|-----|-----|----|----|----|----|-----|----|----|-----|----|-----|----|------|------|------|------|------|
| EPD | - | - | - | - | - | - | - | - | - | - | - | - | - | - | - | - | - |

57 P Bar S 305 Joy

PB ANGUS
COW
HOMO PLD
DOUBLE BLACK
03.01.13
305
AAA 1738202

P BAR S BISMARK 0146X
S A V BISMARK 5682
OAK HILL MISS WIX 725
P BAR S JOY 1007
LIMESTONE THRILL T291
BUFORD JOY 9097

G A R MAKER
S A V ABIGALE 0451
S A V 8180 TRAVELER 004
OAK HILL MISS WIX 9402
O C C LEGEND 616L
AKERS LUCY 5239
BOHI PREDESTINED 6100
J BAR 7 AUDREY'S JOY 5487

| | CED | BW | WW | YW | MA | CEM | SC | ST | DOC | CW | REA | YG | MARB | SMTI | UFAT | UREA | UIMF |
|-------|-----|-----|----|----|----|-----|----|----|-----|----|------|------|------|------|------|------|------|
| EPD | 6 | 1.3 | 51 | 89 | 23 | 9 | - | - | - | 29 | 0.78 | 0.03 | 0.28 | - | - | - | - |
| %Rank | 22 | 24 | 16 | 9 | 9 | 7 | - | - | - | 8 | 14 | 11 | 11 | - | - | - | - |

- AI'd 05.21.15 to Border Agent; P.E. 05.26.15 - 07.16.15 to Turning Point.
- If this February 2015, 23% Lim-Flex heifer calf is any indicator at all of the greatness yet to come out of this Angus cow, we are so excited for you and can't wait to see her progeny being the pride and joy of your program. Country Mile is absolutely breathtaking, her strength of lines, volume and absolutely ideal skeletal angles are picture perfect.
- P Bar S 305 Joy has an intriguing pedigree that ties together the famous SAV Bismarck, our Oak Hill Miss Wix matriarch in addition to some of the strongest cow families to be represented from Buford Ranches.
- This young cow, ranks in the top 15% of the Angus population for RE EPD.

57A Country Mile

LIM-FLEX (23)
COW
HOMO PLD
DOUBLE BLK
02.19.15
PBRS 540C
LFF 2077419

PBRS MILESTONE 137H
LH HAUL 135U
MAGS UNIVERSIALE TIEM
PBRS BELMONT 422B
P BAR S BISMARK 0146X
P BAR S JOY 1007

BASIN FRANCHISE P142
EXLR DUCHESS 7129R
GAR PREDESTINED
MAGS RIO RITA
S A V BISMARK 5682
OAK HILL MISS WIX 725
LIMESTONE THRILL T291
BUFORD JOY 9097

| | CED | BW | WW | YW | MA | CEM | SC | ST | DOC | CW | REA | YG | MARB | SMTI | UFAT | UREA | UIMF |
|-----|-----|-----|----|----|----|-----|----|----|-----|----|-----|----|------|------|------|------|------|
| EPD | - | 0.9 | - | - | - | - | - | - | - | - | - | - | - | - | - | - | - |



Lot 58



Lot 59

58 PBRS Bunk House 48B

LIM-FLEX (50)
BULL
HOMO PLD
HOMO BLK
02.01.14
PBRS 48B
LFM 2057521

MAGS YIP

LBAF SHAWNEE 602

MAGS THE GENERAL

AUTO CARMINDA 656S

TWIN VALLEY PRECISIONE161

SUNSET SHAWNEE 390S

AUTO DOLLAR GENERAL 122R

EXLR LUVLY 821M

JCL LODESTAR 27L

AUTO CARMINDA 872P

GAR PRECISION 1680

WCC BLACKCAP C9

S A V 8180 TRAVELER 004

SV F SHAWNEE 608

| | CED | BW | WW | YW | MA | CEM | SC | ST | DOC | CW | REA | YG | MARB | SMTI | UFAT | UREA | UIMF |
|-------|-----|-----|----|-----|----|-----|-----|----|-----|----|------|------|-------|-------|------|-------|------|
| EPD | 8 | 1.5 | 68 | 107 | 27 | 8 | 0.5 | 11 | 2 | 36 | 0.25 | 0.02 | 00.54 | 67.89 | 0.28 | 15.08 | 4.21 |
| %Rank | 40 | 60 | 30 | 20 | 20 | 15 | 65 | 90 | >95 | 20 | 75 | 90 | 5 | 10 | | | |

- BW: 75 lbs.; WW: 730 lbs.; YW: 1,390 lbs.
- Homozygous polled and homozygous black
- This powerful son of MAGS Yip posted a 205 day weight of 817lbs and an yearling weight of 1261 lbs, while scanning an impressive 15.1 REA.
- PBRS Bunk House 48B is a flushmate to our current herd sire, PBRS Brewed Cold 441B.
- He has a precisely balance EPD profile with added bonuses in the YW, MK, MB and the every so important \$MTI.

59 PBRS 419 Bartlett

LIM-FLEX (50)
BULL
HOMO PLD
DOUBLE BLACK
02.17.14
PBRS 419B
LFM 2063019

MAGS YIP

BUFORD ERICA Z24

MAGS THE GENERAL

AUTO CARMINDA 656S

S A V BISMARCK 7410

BUFORD ERICA 0197

AUTO DOLLAR GENERAL 122R

EXLR LUVLY 821M

JCL LODESTAR 27L

AUTO CARMINDA 872P

S A V BISMARCK 5682

S A V EMBLYNETTE 4117

LIMESTONE TRUMP

J BAR 7 ERICA 726S

| | CED | BW | WW | YW | MA | CEM | SC | ST | DOC | CW | REA | YG | MARB | SMTI | UFAT | UREA | UIMF |
|-------|-----|------|----|----|----|-----|----|----|-----|----|-----|------|------|-------|------|------|------|
| EPD | 10 | -0.1 | 62 | 99 | 28 | 8 | - | - | - | 29 | 0.1 | 0.05 | 0.49 | 66.17 | 0.22 | 12.3 | 4.36 |
| %Rank | 25 | 25 | 55 | 35 | 15 | 15 | - | - | - | 40 | 95 | 95 | 10 | 10 | | | |

- BW: 65 lbs.; WW: 694 lbs.; YW: 1,045 lbs.
- Homozygous polled and double black
- This set of MAGS Yip bulls are very impressive. Evaluated from the ground up, you will be impressed with their feet and legs, their mass and stoutness and their masculine profiles.
- PBRS 419 Bartlett bring the same statistical growth as the other Yip bulls, however he has an advantage in both calculated and actual birthweight figures. He has a double digit CED and a negative BW epd and hit the ground with an actual BW of 65lbs.
- Buford Erica Z24 did an exceptional job raising this herd sire prospect as a first calf heifer.



Lot 60



Lot 61

60 PBRS 433B

LIM-FLEX (50)
BULL
HOMO PLD
DOUBLE BLK
02.24.14
PBRS 433B
LFM 2063056

MAGS XYLOID

CMIL WATCH THIS 921W

DHVO DEUCE 132R

BOHI RHONDA 314R

G A R PREDESTINED

DIAMOND ROSE R031

GPFF BLAQUE RULON
AMY JO DHAN 20L
EXLR NEW GENERATION 071M
DAVIS ROSETTA 9514
B/R NEW DESIGN 036
G A R EXT 4206
EF MAIN STAY 541M

| | CED | BW | WW | YW | MA | CEM | SC | ST | DOC | CW | REA | YG | MARB | SMTI | UFAT | UREA | UIMF |
|-------|-----|-----|----|----|----|-----|------|----|-----|----|------|------|------|------|------|-------|------|
| EPD | 8 | 0.9 | 61 | 93 | 19 | 7 | 0.47 | 11 | 22 | 27 | 0.09 | 0.07 | 0.57 | 68.6 | 0.35 | 15.43 | 3.64 |
| %Rank | 40 | 45 | 60 | 50 | 85 | 25 | 75 | 90 | 40 | 50 | 95 | 95 | 4 | 10 | | | |

- BW: 70 lbs.; WW: 775 lbs; YW: 1,325 lbs.
- Homozygous polled and double black
- If you are in the market for a solid, fault free half blood breeding bull, PBRS 433B is the solution for you. His actual data is ideal with a bw of 70lbs, ww of 860lbs and yw of 1325 in addition to a 15.91 adjusted REA.
- The MAGS Xyloid cattle have been making heads turn in all levels of the industry, it is no wonder with progeny like this. They are super sound and can be used on a variety of cow types.
- He is high marbling, high \$MTI and won't give up performance or add birthweight to your program.

61 PBRS 417B

LIM-FLEX (50)
BULL
HOMO PLD
DOUBLE BLACK
02.14.14
PBRS 417B
LFM 2063058

MAGS THE GENERAL

BUF EISA EVERGREEN 9172

AUTO DOLLAR GENERAL 122R

EXLR LUVLY 821M

LIMESTONE EXT S666

J BAR 7 EISA EVERGREEN 63

LVL5 SECRET WEAPON 4408K
AUTO KYRIA 232K
AUTO BLACK DAKOTA 129J
EXLR LUVLY 084F
N BAR EMULATION EXT
WK BLACKBIRD 9045
SITZ NEW DESIGN 349M
SITZ EISA EVERGREEN 2774

| | CED | BW | WW | YW | MA | CEM | SC | ST | DOC | CW | REA | YG | MARB | SMTI | UFAT | UREA | UIMF |
|-------|-----|----|----|-----|----|-----|------|----|-----|----|------|----|------|-------|------|-------|------|
| EPD | 6 | 1 | 67 | 109 | 27 | 9 | 0.31 | - | - | 36 | 0.15 | 0 | 0.21 | 58.18 | 0.23 | 15.54 | 3.2 |
| %Rank | 65 | 50 | 30 | 15 | 20 | 10 | 85 | - | - | 20 | 90 | 85 | 25 | 25 | | | |

- BW: 78 lbs.; WW: 830 lbs.; YW: 1,380 lbs.
- Homozygous polled and double black
- Great spread bull, 1.0 for BW and 109 for YW and excels for CEM ranking in the top 10% of the breed.
- He is a product of blending the same great Eisa Erica cow family that has been so very instrumental in the progression of the Sitz Angus program with the growth and milk Limousin powerhouse, MAGS The General.
- 50% Lim-Flex herd sire prospect that is sure to produce herd sires and high quality replacements.

62 PBRS Branding Iron 415B

LIM-FLEX (50)
BULL
DOUBLE PLD
HOMO BLK
02.09.14
PBRS 415B
LFM 2057507

DHVO DEUCE 132R

GPFF BLAQUE RULON
AMY JO DHAN 20L
S A V 8180 TRAVELER 004
OAK HILL MISS WIX 940Z

BLACK DIAMOND
QUAIL RUN RAMONA BP
BLACK CAT DHAN 152G
GPFF AMBER JO
SITZ TRAVELER 8180
BOVD FOREVER LADY 8003
N BAR EMULATION EXT
HOMESTRETCH MISS WIX 663

| | CED | BW | WW | YW | MA | CEM | SC | ST | DOC | CW | REA | YG | MARB | SMTI | UFAT | UREA | UIMF |
|-------|-----|-----|----|-----|----|-----|------|----|-----|----|-----|------|------|-------|------|-------|------|
| EPD | 8 | 1.7 | 77 | 109 | 21 | 5 | 1.24 | 12 | 19 | 36 | 0.1 | 0.07 | 0.03 | 52.63 | 0.25 | 12.85 | 3.26 |
| %Rank | 40 | 65 | 5 | 15 | 65 | 60 | 3 | 85 | 55 | 20 | 95 | 95 | 45 | 45 | | | |

- BW: 77 lbs.; WW: 710 lbs.; YW: 1,210 lbs.
- If you haven't had the opportunity to research the dominance of the Oak Hill Miss Wix cow family in the Angus breed, we strongly encourage you to do so. The cow family is the epitome of quality, they consistently produce leading herd sires and replacement females.
- PBRS Branding Iron 415B is a flushmate to PBRS 024X, who is the sire of numerous females featured in this offering. They are a prime example of what this mating can produce.
- Son of past National Champion and sire of champions, DHVO Deuce.



Lot 62

63 PBRS Bradshaw 466B

LIM-FLEX (50)
BULL
HOMO PLD
DOUBLE BLK
03.09.14
PBRS 466B
LFM 2063018

MAGS ZAMINDAR

BOHI TOP DOLLAR 7144T
MAGS TAVISH
MCC TRAVELER 234D WCC
STEDEMS ROYAL LASS 303

AUTO DOLLAR GENERAL 122R
CARROUSELS PINA COLADA
DHVO DEUCE 132R
MAGS PUDDLES
GDAR SVF TRAVELER 234D
B L R ACF ELBA 8053
S A NEUTRON 377
SAF ROYAL LASS 0252

| | CED | BW | WW | YW | MA | CEM | SC | ST | DOC | CW | REA | YG | MARB | SMTI | UFAT | UREA | UIMF |
|-------|-----|----|----|-----|----|-----|-----|----|-----|----|------|------|------|-------|------|------|------|
| EPD | 5 | .6 | 68 | 107 | 24 | 6 | 0.6 | - | - | 39 | 0.38 | 0.04 | 0.3 | 61.24 | 0.23 | 15.1 | 3.19 |
| %Rank | 5 | 95 | 30 | 20 | 40 | 45 | 50 | - | - | 10 | 45 | 95 | 20 | 20 | | | |

- BW: 86 lbs.; WW: 693 lbs.; YW: 1,205 lbs
- Homozygous polled and double black
- Here is an opportunity to add a maternal brother to the \$40,000 PBRS Winning Ways out of the \$10,000 Tye J Royal Lass, both of which topped the P Bar S Proof of Progress III sale.
- The Tye J Royal Lass family is one of the truly great producers of consistent quality and exceptional phenotype.
- PBRS Bradshaw 466B scanned a 15.84 REA at 12051b
- Sired by one of the most exciting young Purebred bulls in the The Grassroots Genetics line-up, our very own MAGS Zamindar.



Lot 63

64 PBRS Below Zero 46B

LIM-FLEX (37)
BULL
HOMO PLD
HOMO BLK
01.24.14
PBRS 46B
LFM 2057504

MAGS XYLOID

DHVO DEUCE 132R
BOHI RHONDA 314R
MCC TRAVELER 234D WCC
STEDEMS ROYAL LASS 303

GPFF BLAQUE RULON
AMY JO DHAN 20L
EXLR NEW GENERATION 071M
DAVIS ROSETTA 9514
GDAR SVF TRAVELER 234D
B L R ACF ELBA 8053
S A NEUTRON 377
SAF ROYAL LASS 0252

| | CED | BW | WW | YW | MA | CEM | SC | ST | DOC | CW | REA | YG | MARB | SMTI | UFAT | UREA | UIMF |
|-------|-----|-----|----|----|----|-----|-----|----|-----|----|------|-----|------|-------|------|-------|------|
| EPD | 8 | 2.3 | 59 | 94 | 17 | 7 | 0.5 | - | 20 | 30 | 0.23 | 0.1 | 0.31 | 58.25 | 0.3 | 13.95 | 3.86 |
| %Rank | 40 | 80 | 65 | 50 | 95 | 25 | 65 | - | 50 | 35 | 80 | >95 | 20 | 25 | | | |

- BW: 74 lbs.; WW: 705 lbs.; YW: 1,280 lbs.
- Homozygous polled and homozygous black
- As a cattleman searching for a homo/homo bull that will give you the best of both the Limousin and Angus breeds, PBRS Below Zero 46B is the bull for you. He perfectly combines the Lim-Flex icon MAGS Xyloid and the foundation donor Tye J Royal Lass.
- Maternal sister, PBRA Winning Ways, to this tremendous herd sire prospect has produced sale toppers for herds across the country and they will be featured lots this upcoming sale season. This is your opportunity to invest in a great one who's value will just continue to go up in the future.



Lot 64

WHAT IS A BULL WORTH?

Patrick Gunn, Iowa State University Extension cow-calf specialist

I often get the question “How much should I pay for a bull?” My first answer is “Whatever the market will bear.” Admittedly, that answer really gives no insight into return on investment for the producer relative to traits of emphasis for their particular marketing goals. With the record prices currently being observed in all markets of the beef industry, it is no secret that this translates to increased prices of replacement breeding stock.

While to my knowledge, no calculator exists to determine the exact price a producer should spend on a bull, there are multiple factors that can be considered to establish a base price. Typical thumb rules that I have heard over the years for the value of an average purebred or composite bull include 2 times the value of a fed steer, 5 times the value of a feeder calf at weaning, or 25 times the cwt price of feeder calves. In the current market, using these thumb rules, we get an approximate range of \$3975 to \$4650, which is very representative of early sale reports from 2014.

While spending less does not insinuate you have purchased an inferior bull, it should be expected that an above average bull for traits such as calving ease, weaning weight, docility, stayability, marbling, etc., will likely garner a premium.

Assuming an average bull in today’s market will be utilized for 4 years and mated to 100 cows, the mating fee over the life of the bull will be \$43 per cow. Regardless of base price, for every \$500 more spent on a herd sire, it raises the service fee only \$5 per cow over the life of the bull.

Given today’s feeder prices, for every \$500 more spent on a herd sire, only 3 more pounds of weaning weight per calf would need to be obtained to offset the added investment on a sire improved growth EPDs. Similarly, only 0.5 more calves would need to be born to a sire with an improved calving ease (CE/CED/CEM) EPD profile. Given the fluctuations in grid premiums and discounts, return on investment needed for bulls with improved carcass traits is harder to pinpoint, and will be specific to your operation.

The initial investment of a bull in today’s market may seem staggering, but it is an investment that adds immediate value to the herd working forward.



Crossbreeding, the only **FREE** Lunch in the Cattle Business

The Benefits of Hybrid Vigor without the Hassle: Crossbreeding made easy with Lim-Flex®

Crossbreeding for the right blend of muscle, maternal ability and profit is easier with Lim-Flex. Registered Lim-Flex seedstock, the pedigreed blend of 25-75% Limousin with Angus (black or red), feature the fleshing ability of Angus.

Lim-Flex takes the hassle out of crossbreeding. Lim-Flex provides the right amount of Limousin and Angus to excel in any market, without the extra management of rotational crossbreeding. Whether you're breeding calves to sell through Strauss Brands, CAB or the local livestock market, Lim-Flex not only fit, but can top the market.

Progressive producers recognize the advantages of hybrid vigor:

- ...20% more pounds of calf per cow exposed (due to hybrid advantages in age at puberty, conception rate, survival to weaning, milk production and weaning weight)
- ...1.3 years of additional cow longevity
- ...30% greater lifetime production
- ...Increased fertility and decreased gestation length with hybrid bulls

LIM-FLEX ADVANTAGES

- ...Flexible seedstock for simple, easily managed crossbreeding
- ...Flexible marketing options to maximize profit
- ...Flexible market progeny that consistently hit dressing percent, along with yield and quality grade targets for mainstream markets
- ...Flexible females adapted for efficiency across a wide range of environments



North American Limousin Foundation

303/220-1693 • www.nalf.org

"Not only do Lim-Flex females offer unprecedented longevity, they are extremely fertile and maternally inclined."

Andy Bailey
Star Valley Ranch, Hiko, NV

"Our cattle have to be stout, easy-fleshing, maternal, and able to fend for themselves. Lim-Flex do this better than any other type of cattle we've ran."

Casey Deuter
Deuter Ranches, Ree Heights, SD

USING LIMOUSIN & LIM-FLEX® EPDS TO MAKE GENETIC IMPROVEMENT

The North American Limousin Foundation (NALF) uses all available information to predict an animal's EPD. This information includes: individual performance, pedigree, progeny and grand progeny performance, and soon genomic information. All this information is combined into one, easy to use, number that helps producers make genetic improvement in their herd.

Since the spring of 2015, NALF joined 11 other U.S. and Canadian breed associations to form the largest international multi-breed cattle evaluation in the world through International Genetic Solutions (IGS). This allows growth and carcass EPDs for Limousin and Lim-Flex® (Limousin x Angus hybrid) animals to be directly compared with Red Angus, Simmental, Gelbvieh, Shorthorn, Maine Anjou, and Chianina animals (and all their hybrid animals). This makes selection decisions easier for commercial producers.

Listed below are the definitions for Limousin and Lim-Flex EPDs and the units in which they are published. For more information visit www.NALF.org or call 303-220-1693.

Maternal and Growth Traits

Calving ease direct (CED): Percent of unassisted births of a bull's calves when he is used on heifers. A higher number is favorable, meaning better calving ease.

Birth weight (BW): Predicts the difference, in pounds, for birth weight of the calf.

Weaning weight (WW): Predicts the difference, in pounds, for weaning weight (adjusted to age of dam and a standard 205 days of age). This is an indicator of growth from birth to weaning.

Yearling weight (YW): Predicts the expected difference, in pounds, for yearling weight (adjusted to a standard 365 days of age). This is an indicator of growth from birth to yearling.

Milk (MK): The genetic ability of a sire's daughters to produce milk expressed in pounds of weaning weight.

Total maternal (TM): An index that combines growth and milk information as a prediction of the weaning weight performance of calves from a sire's daughters. A greater TM value means a mother that returns comparatively higher weaning weights on her calves. $TM\ Index = MK\ EPD + \frac{1}{2}\ WW\ EPD$.

Calving ease maternal (CEM): Represented as percent of unassisted births in a sire's first-calving daughters. A higher number represents more favorable calving ease.

Scrotal circumference (SC): Is a good indicator of age at puberty, and is a highly heritable trait. EPDs for scrotal circumference are expressed in centimeters, with higher values indicating genes for larger yearling scrotal circumferences of sons and earlier puberty of daughters.

Stayability (ST): Predicts the genetic difference, in terms of percent probability, that a bull's daughters will stay productive within a herd to at least six year of age. The stayability EPD is one of the best measures currently available to compare a bull's ability to produce females with reproductive longevity.

Docility (Doc): Predicts genetic differences in the probability that offspring are scored a 1 (docile) or 2 (restless) as opposed to 3, 4, 5 or 6 (nervous to very aggressive). Higher EPD values for docility represent genetics for calmer behavior.

Carcass Traits

Yield grade (YG): Differences in yield grade score, which is a predictor of percent retail product. Smaller values suggest that progeny will have a better lean to fat ratio.

Carcass weight (CW): Differences in pounds of hot carcass weight, adjusted to an industry standard age endpoint.

Ribeye area (REA): Differences in ribeye area in inches between the 12th and 13th rib. Greater ribeye areas are preferable.

Marbling (MB): Predicts the differences in the degree of marbling within the ribeye as expressed in marbling score units. Greater marbling numbers are preferable and are an indicator of higher carcass quality grades.

Fat (FT): Differences for fat thickness, in inches, for a carcass over the 12th rib. Smaller numbers of fat thickness are preferable as excess fat can be detrimental to yield grade.

Mainstream Terminal Index (\$MTI): Predicts genetic differences in profit per carcass by combining the potential for and value of post-weaning growth, quality grade and yield.

| | CED | BW | WW | YW | MK | TM | CEM | SC | ST | DOC | YG | CW | REA | MB | FT | \$MTI |
|--|------|-------|-------|-------|-------|-------|-----|------|-----|-----|---------|-------|-------|---------|---------|---------|
| | (%) | (lbs) | (lbs) | (lbs) | (lbs) | (lbs) | (%) | (cm) | (%) | (%) | (units) | (lbs) | (in2) | (units) | (units) | (units) |
| Limousin and Lim-Flex® Breed Average EPDs for Non-Parent Animals (Fall 2015 International Cattle Evaluation) | | | | | | | | | | | | | | | | |
| Limousin Calves Average | 7.0 | 1.3 | 62 | 88 | 23 | 54 | 5 | 0.6 | 16 | 21 | -0.14 | 24 | 0.36 | -0.09 | -0.03 | 46.38 |
| Lim-Flex Calves Average | 9.0 | 0.6 | 64 | 100 | 24 | 56 | 7 | 0.7 | 15 | 17 | -0.05 | 30 | 0.37 | 0.27 | -0.01 | 59.84 |
| EPD Percentile Ranks for Combined Limousin and Lim-Flex® Non-Parent Animals (Fall 2015 International Cattle Evaluation) | | | | | | | | | | | | | | | | |
| 5% | 14.0 | -2.0 | 77 | 118 | 31 | 65 | 10 | 1.1 | 21 | 33 | -0.27 | 42 | 0.68 | 0.52 | -0.06 | 69.01 |
| 15% | 11.0 | -0.7 | 72 | 109 | 28 | 61 | 8 | 1.0 | 19 | 29 | -0.22 | 37 | 0.56 | 0.33 | -0.05 | 62.15 |
| 25% | 10.0 | 0.0 | 69 | 104 | 26 | 59 | 7 | 0.8 | 18 | 26 | -0.18 | 33 | 0.49 | 0.21 | -0.04 | 57.80 |
| 50% | 7.0 | 1.2 | 63 | 93 | 23 | 55 | 6 | 0.6 | 16 | 20 | -0.11 | 26 | 0.36 | -0.01 | -0.02 | 50.04 |
| 75% | 5.0 | 2.2 | 57 | 82 | 20 | 50 | 4 | 0.4 | 13 | 14 | -0.03 | 20 | 0.24 | -0.14 | -0.01 | 44.65 |

P Bar S

RANCH



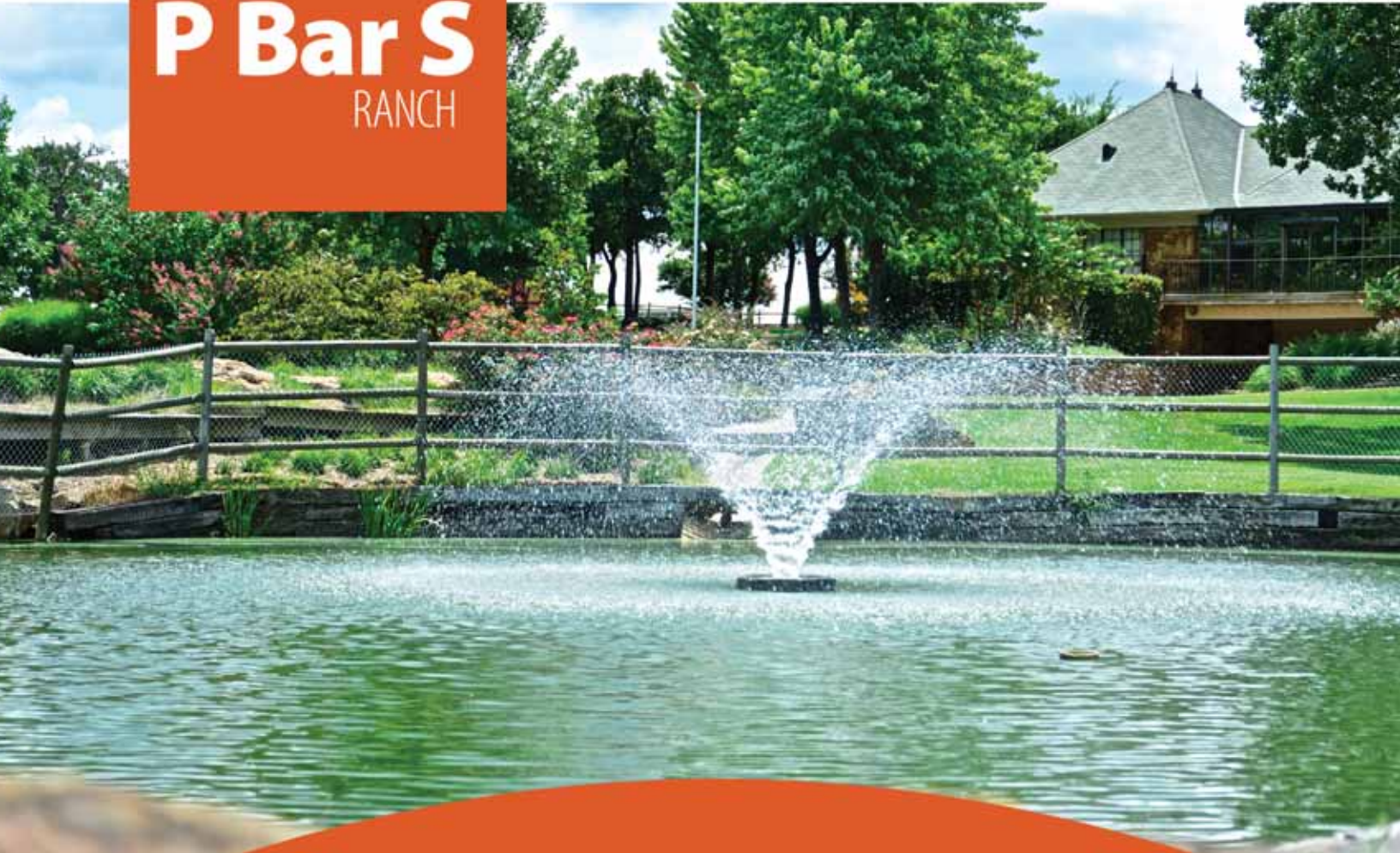


Randall O. Ratliff
1212 Laurel St., Nashville, TN 37203

**FIRST CLASS
PRE-SORTED
PAID**
Montezuma, Iowa
Permit No. 30



P Bar S
RANCH



October 3, 2015
PROOF OF PROGRESS VIII Sale